The background of the slide features a silhouette of the Eiffel Tower against a sunset sky. The sky transitions from a dark brown at the bottom to a bright yellow at the top. The tower is positioned on the right side of the frame, with its base near the bottom and its spire reaching towards the top.

It is 11:30 a.m., and on this July 30th, the temperature will reach 50°C in the streets of Paris.

« There is nothing left, no cries, no rumbling, no distant murmurs. »\*

Those who could flee have already done so.  
Remaining are the paralyzed and the prisoners, the reckless and the insane.

The courageous — may they inspire us."

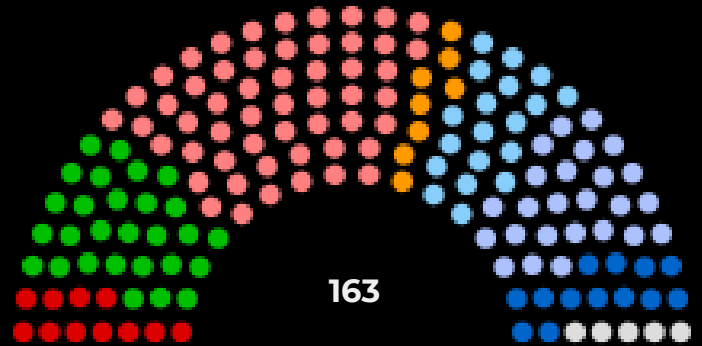
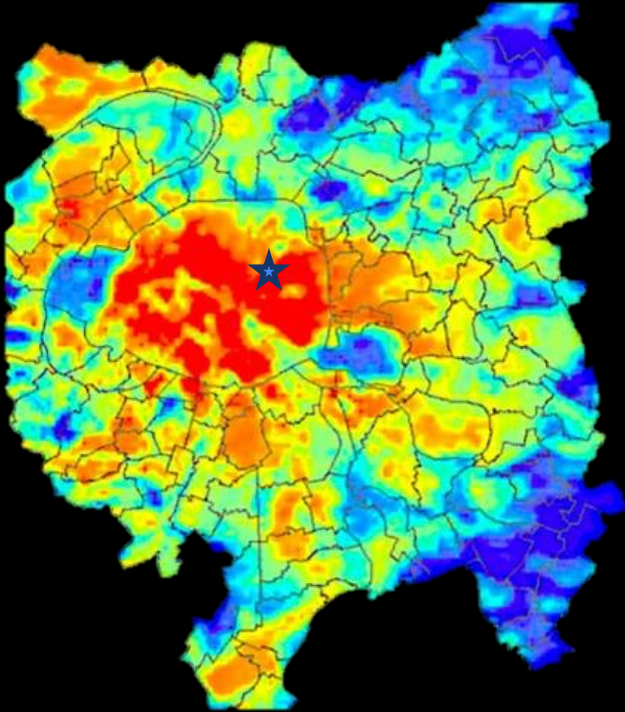
# Paris at 50°C

Roast, flee or act

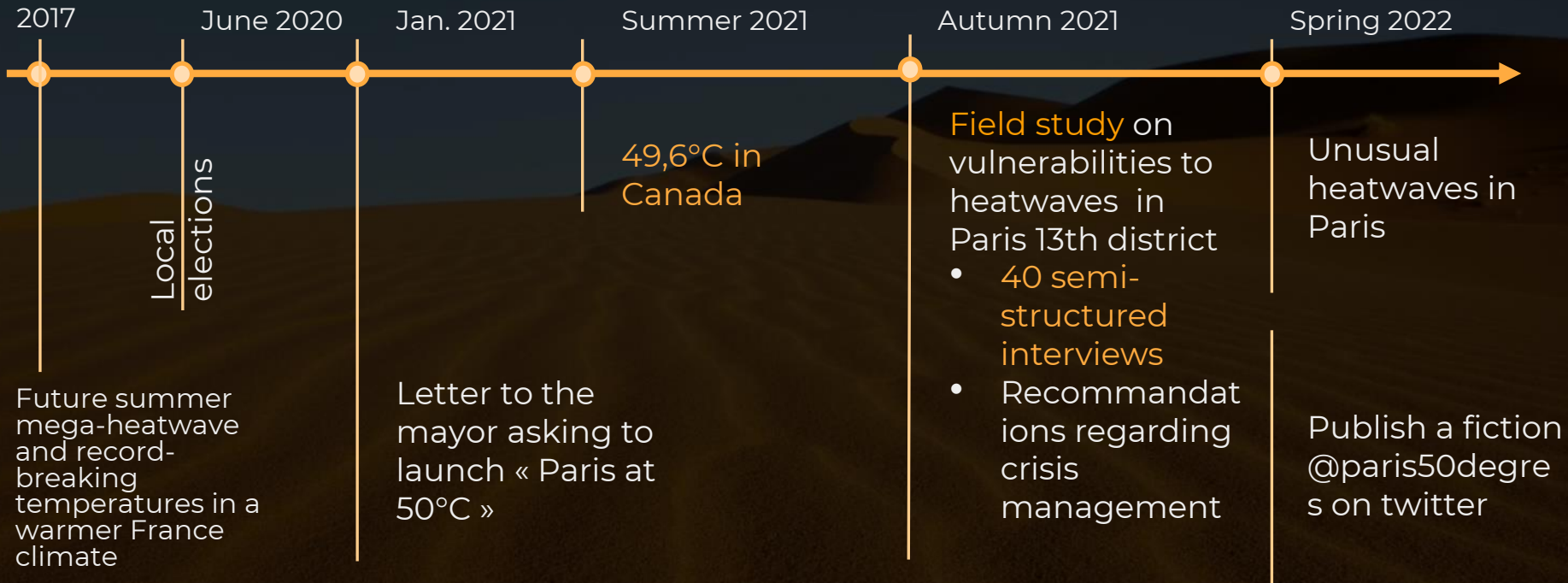


Alexandre Florentin | Paris City Councillor

# From what perspective am I speaking to you?



# Paris at 50°C: a 4y. effort



Margot Bador et al 2017 Environ. Res. Lett. 12 074025

# Paris at 50°C: a 4y. effort

July 2022

The Paris Council unanimously approves the launch of the transpartisan mission 'Paris at 50°C.'

Oct. - 2022: 6-month mission

A **transpartisan** effort:

- 75 hearings: researchers, politicians, technical experts, administrations, businesses, NGOs...
- Approximately 200 written documents analyzed (books, scientific articles, technical or public policy documents...)
- Nearly 40 written contributions
- 4 field visits
- Complementary interviews...

April 2023

Unanimous adoption of the report: **diagnosis + 85 recommendations**

Local, National and Worldwide media cover: articles, frontpage, primetimes

# Paris at 50°C: a 4y. effort

Oct.2023

Crises management exercise: 2 districts involved in a 1-day role play + 1 tabletop drill for the administration

Dec. 2024

- Urban plan
- Climate plan
- Environmental health plan
- Resiliency plan

All are « 50°C - ready » and part of the official Paris strategy

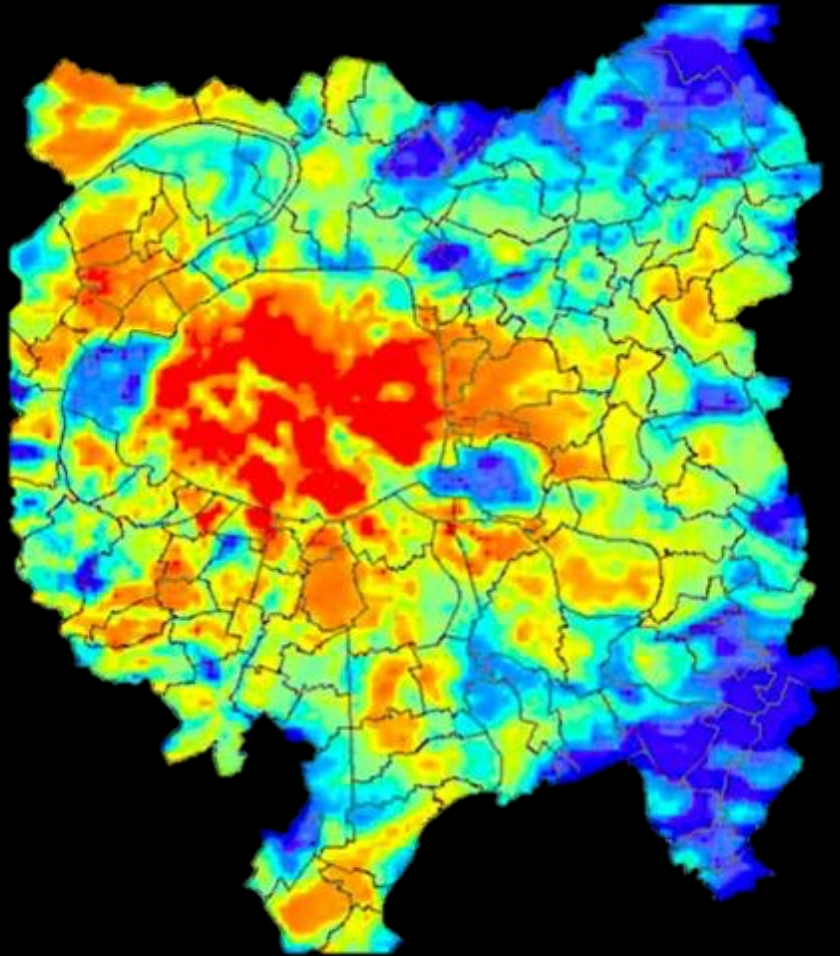
**« Paris at 50°C » is a collective  
crime investigation**

An elderly woman with short grey hair is seated at a wooden table. She is wearing a white short-sleeved shirt and has her right hand raised to her face, with her fingers near her mouth. Her eyes are closed or looking down. The background shows a room with a window covered by patterned curtains, a small white electric fan on a wooden side table, and a box labeled 'Käsefort' on the table below. The overall lighting is dim, and the image has a dark overlay.

# Heatwaves are invisible killers

Excess mortality in Paris: +190% in Aug. 2003  
Paris #1 european capital city to die of heat  
489 000 died from extreme heat in 2019, worldwide





# Paris is a "radiator-city" on summer nights

Paris in the top 10  
most densely  
populated cities

Less than 80% of Paris  
is on open ground

# Heat already affects our technical sphere

- Electric network
- Transport network
- Electronics & appliances
- IT



# Heat influences our culture

| Schedules, food, ...

*Photo of a boteillon, giant aperitif in the street in Spain*

The image is a vertical collage of three photographs. The left panel shows an elderly woman with white hair, wearing a white top, with her hand near her face in a thoughtful or emotional pose. The middle panel shows a perspective view of a railway track receding into the distance under a bright sky. The right panel shows a group of people, some in yellow shirts, gathered in what appears to be a public space or a transit station.


Health

Technic

Culture

« It changes everything »

# Paris at 50°C is already a reality



36°C – 44°C in a school

57°C in a restaurant's kitchen

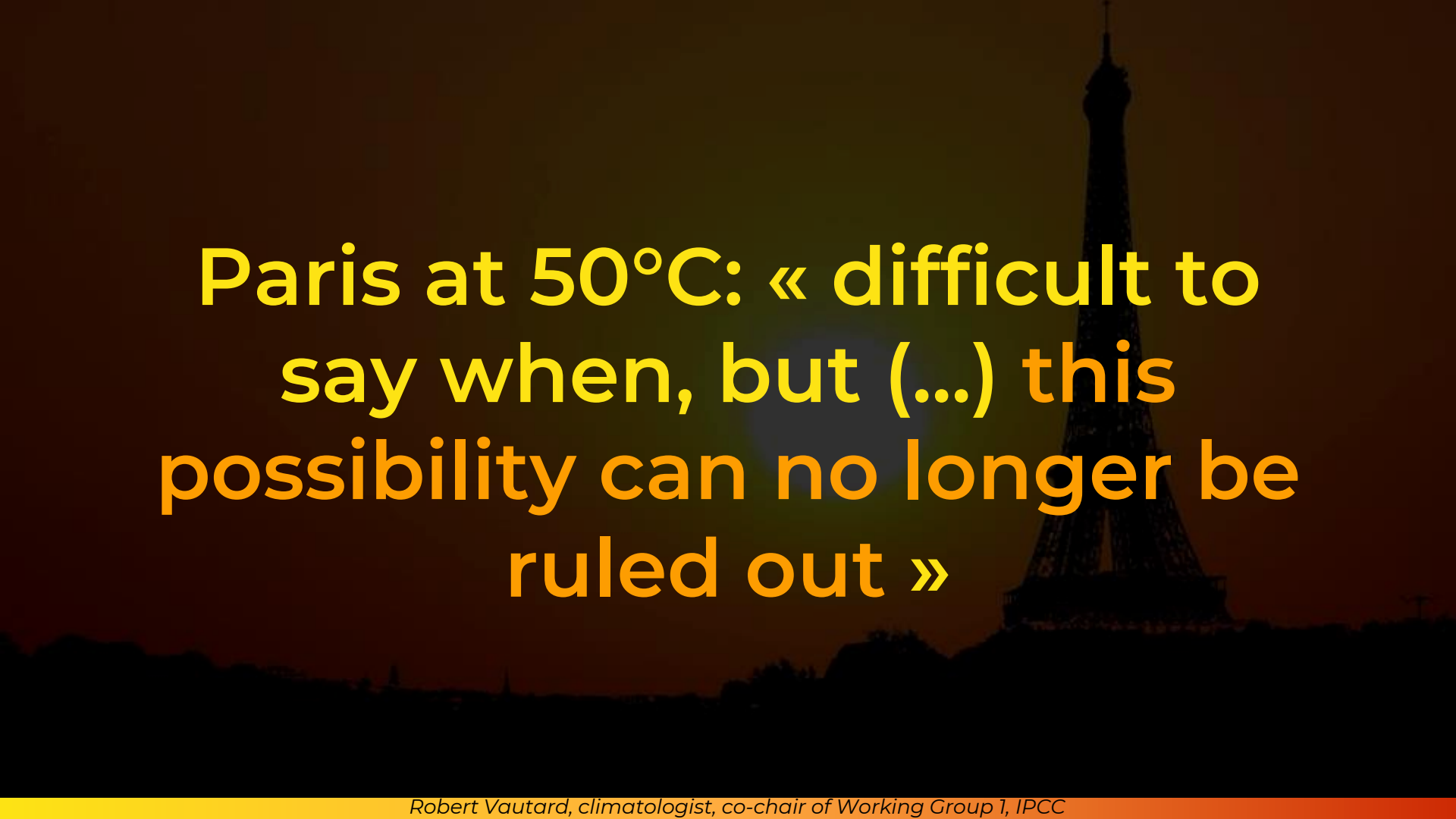
Street bitumen at 60°C

Zinc roof above +70°C

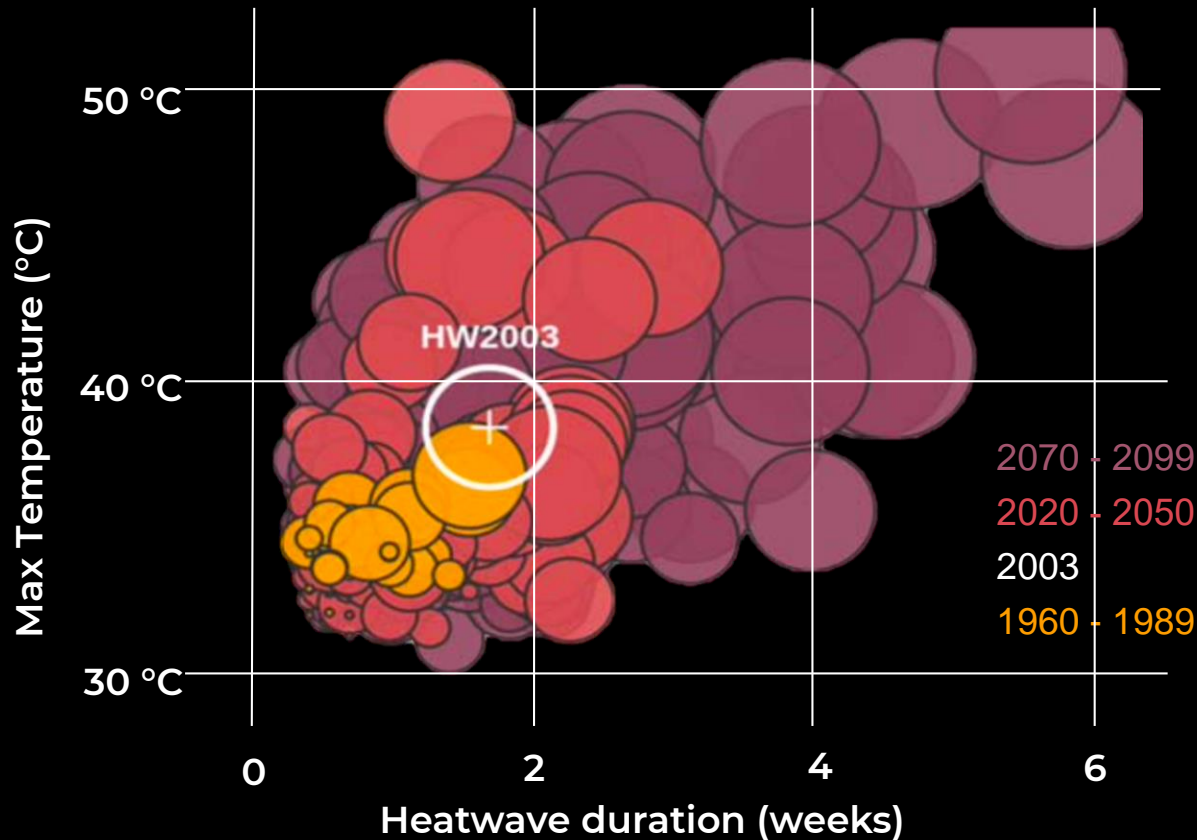
Heatwaves in June and September

The image features a silhouette of the Eiffel Tower on the right side, set against a dark, gradient background that transitions from a deep red at the bottom to a dark blue at the top. A bright, glowing sun is visible in the center, partially obscured by the tower's structure. The overall scene suggests a sunset or sunrise in Paris.

**Paris at 50°C: when?**

The background of the slide features a silhouette of the Eiffel Tower against a sunset sky with a color gradient from dark blue to orange. The tower is positioned on the right side of the frame.

**Paris at 50°C: « difficult to  
say when, but (...) this  
possibility can no longer be  
ruled out »**



**Paris at 50°C:**  
« difficult to say when, but (...) this possibility can no longer be ruled out »



The image features a silhouette of the Eiffel Tower on the right side, set against a background of a sunset sky with a gradient from dark red at the bottom to a lighter orange and yellow at the top. The tower's intricate lattice structure is visible against the bright part of the sky. The overall mood is dramatic and urgent, reflecting the high-temperature theme of the text.

**Paris at 50°C: what  
should we do?**

**We can adapt anything  
but**

**We cannot adapt everything ...  
to anything**

# Protect the children

*Cours Oasis, Paris / L. Bourgogne - VdP*





**Every street  
is a garden**

Rue végétalisée, Paris / G. Bontemps – VdP

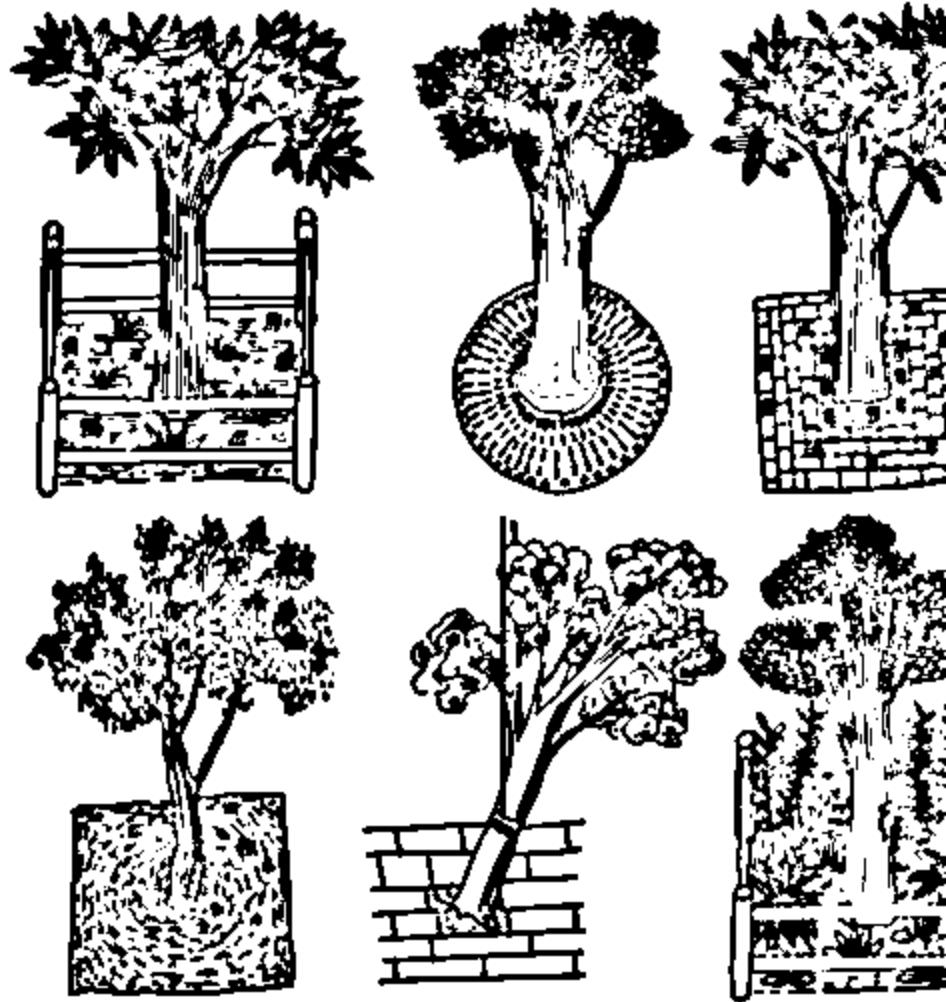
1 Parisien  
=  
1 gardener

*Jardin Fauremidable, Paris*



# Protect, develop and choose our plant world

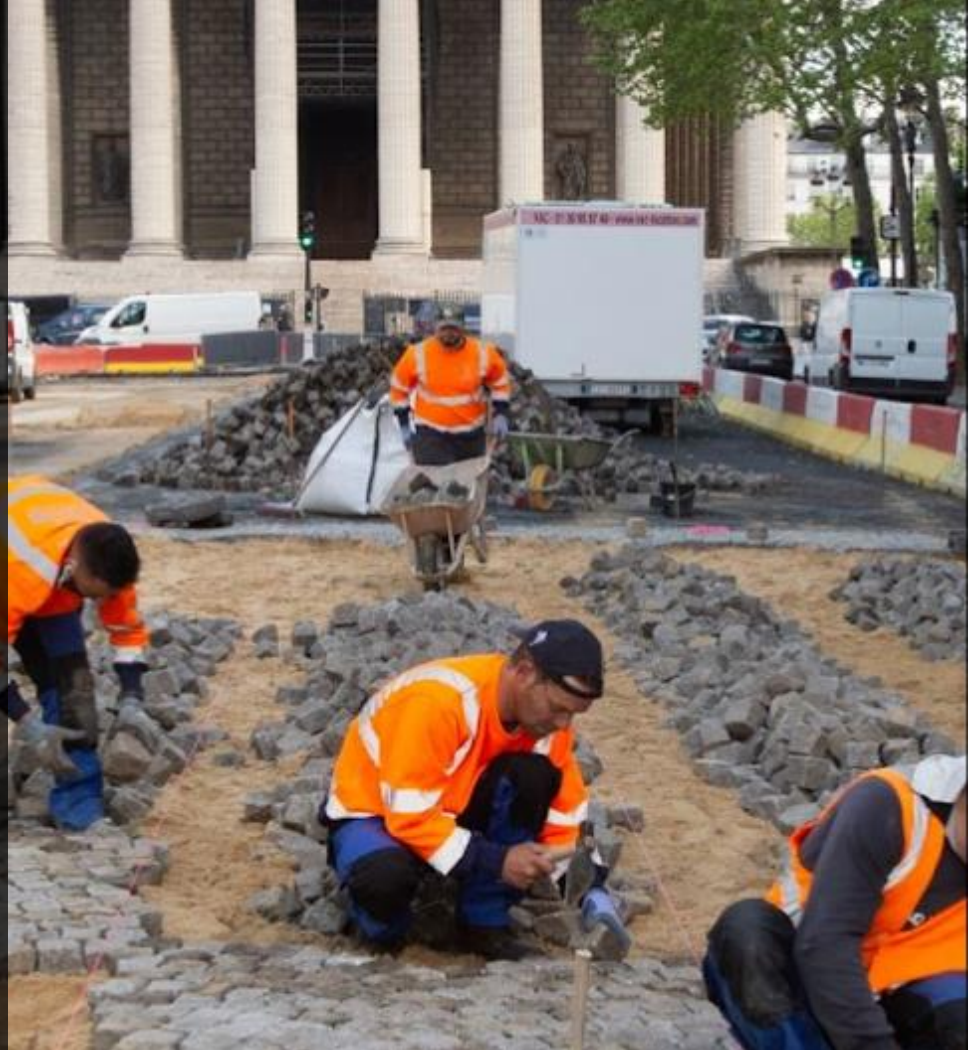
*Illustration de pieds d'arbres / J. Defait*





# Adapt working conditions

*Pavage de la rue Royale, 8ème / C.BELIN - VdP*



The image is a composite of two maps of Paris. The left map shows a city grid with blue and dark blue shaded areas representing thermal winds, with a white dot at Montmartre. The right map is a topographic relief map of the same area, with the same blue and dark blue shaded areas overlaid on the terrain. The text 'Gone with the wind' is written in large yellow letters across the right map. Labels for 'Montmartre', 'Buttes-Chaumont', and 'Père Lachaise' are in yellow text on dark grey boxes with white dots. The footer text is in white on a dark background.

Montmartre

Buttes-  
Chaumont

Père  
Lachaise

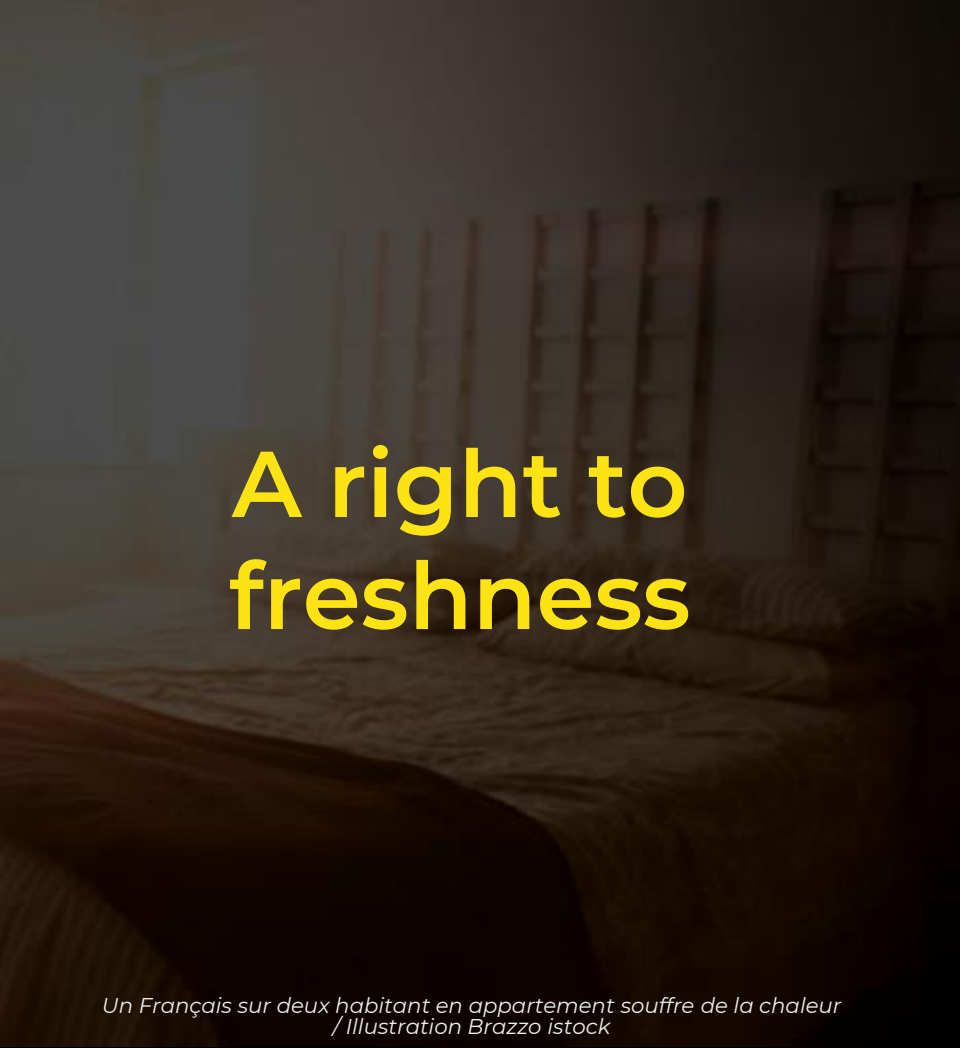
Gone with  
the wind



# Resourceful roofs, a sky for everyone

*Vue des toits parisiens végétalisés par des toits vénitiens / Roofscapes*





# A right to freshness

*Un Français sur deux habitant en appartement souffre de la chaleur  
/ Illustration Brazzo istock*

# Swimming allowed

Canal St Martin ouvert à la baignage / J. de Rosa - AFP





# A Midsummer Night's Dream

*Musée Louvre – Lens / F.Iovino*

# Shadow paths

*Ombrière du Vieux Port, Marseille / G. Cohen*





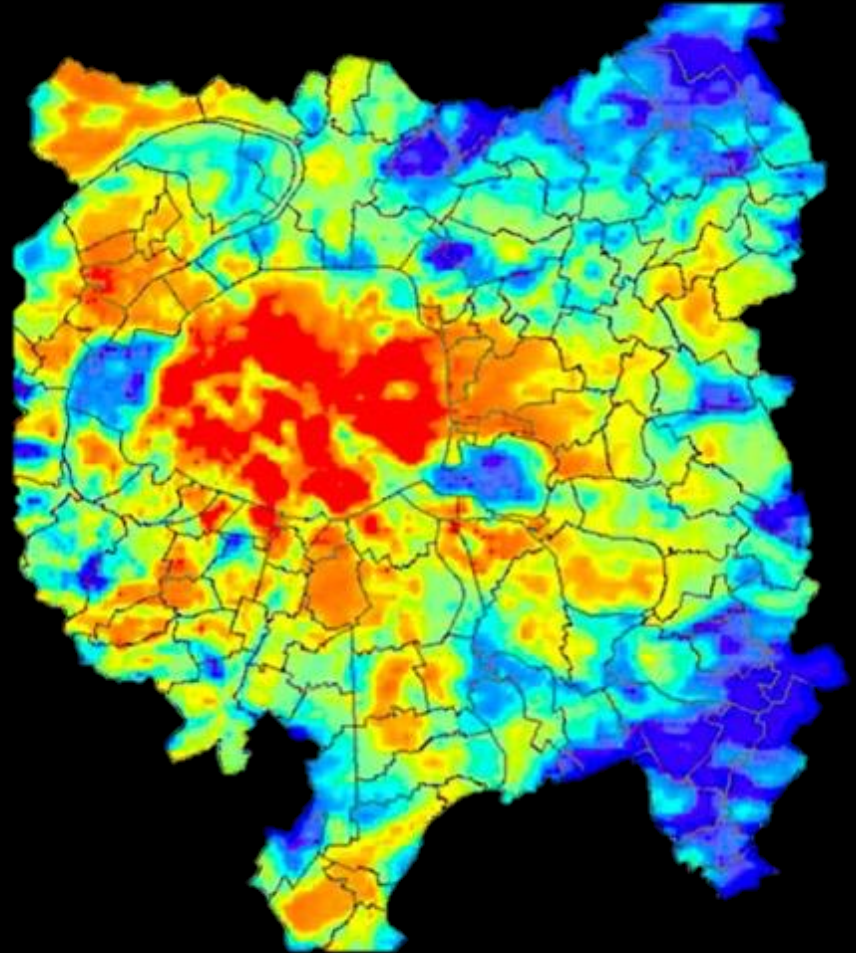
**Prepare for  
the Big Heat**



**Create a  
shared  
« adaptation  
reflex »**

*Inès Djadouadji, championne de France de K1 | Ville de Vitry*

**Cooperate to  
lower  
temperatures  
across the  
region**





**We can adapt anything  
but**

**We cannot adapt everything ...  
to anything**