



WORLD
RESOURCES
INSTITUTE

Tools for Climate Policy Tracking: A Sampler

DNPI-WRI Policy Tracking Workshop, August 22, 2013

Taryn Fransen, World Resources Institute

About our tools work



The tools

 GHG ACCOUNTING	Policies & Actions Standard	Mitigation Goals Standard
 IMPLEMENTATION	Policy Implementation Tracking Tool	Policy Implementation Diagnostic Tool
 SECTOR-SPECIFIC	Forests	Industry



GHG Accounting

Two standards under development

Policies and Actions Standard

- How to quantify changes in GHG emissions resulting from policies and actions
- Examples: vehicle fuel efficiency standards, feed-in tariffs, building energy codes, emission trading programs, waste management programs, etc.

Mitigation Goals Standard

- How to quantify GHG reductions and track progress toward national or sub-national GHG reduction goals
- Examples: absolute goals, intensity goals, deviations from baseline scenarios, carbon neutrality goals

Policies and Actions Standard

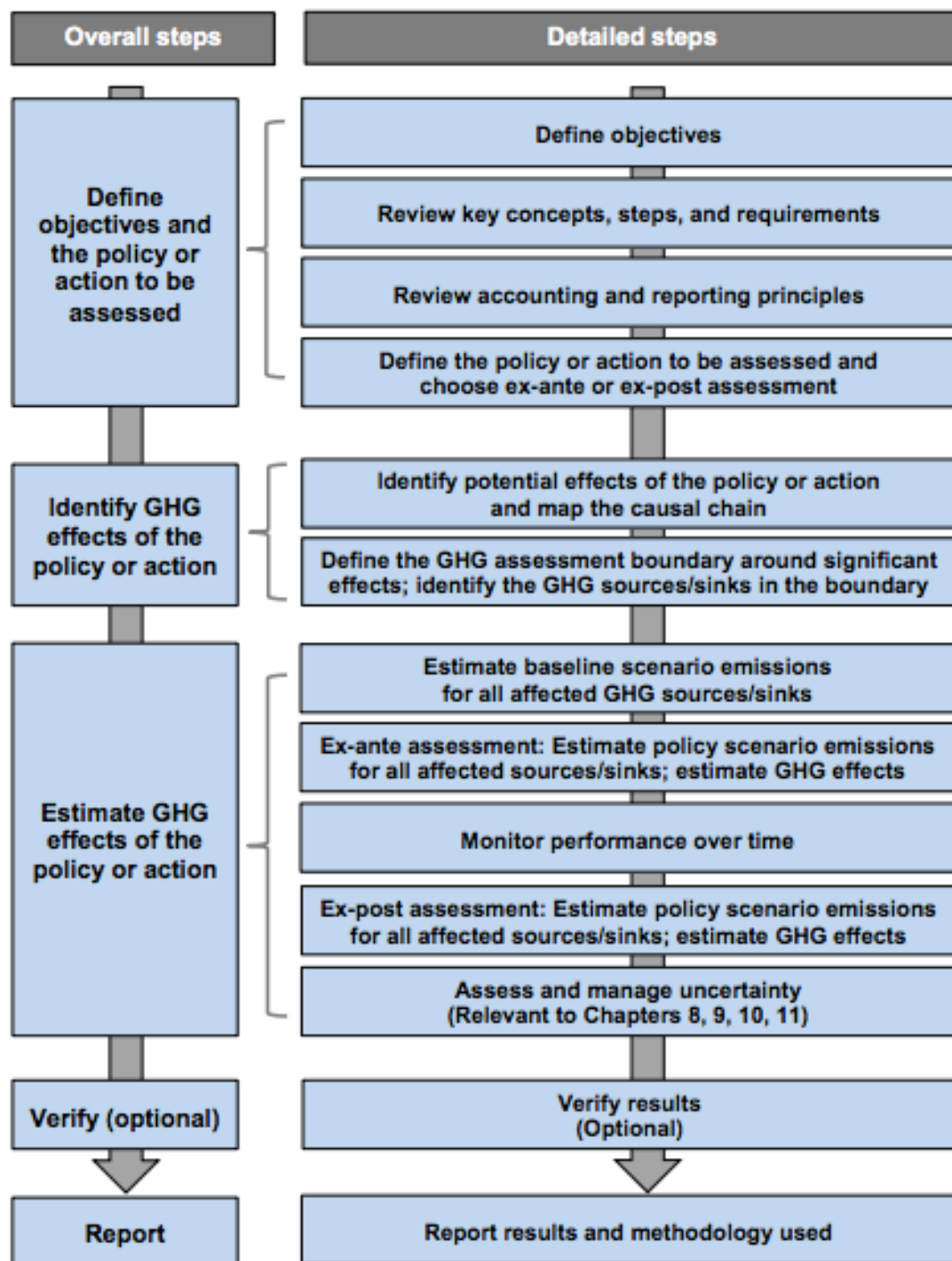
What effect will policy/action have on GHG emissions?

How to track GHG impact?

What effect has policy/action already had?

Standardized Approach

Policy Attribution



Mitigation Goals Standard

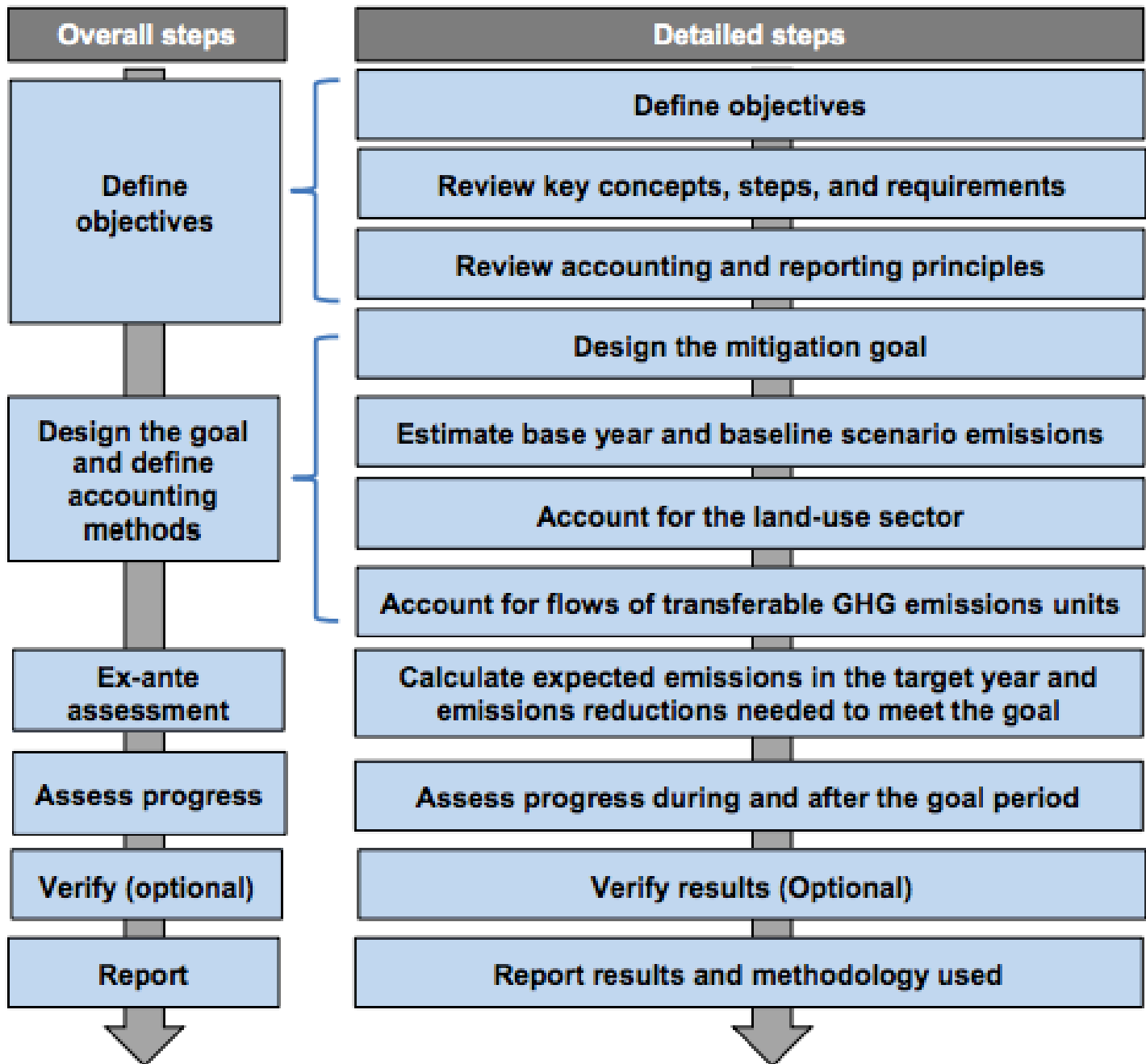
Factors to consider in developing goal?

Estimate future reductions associated w/
goal

Track progress toward goal

Evaluate/report on goal achievement

Standardized Approach





Implementation

Policy Implementation Tracking Tool

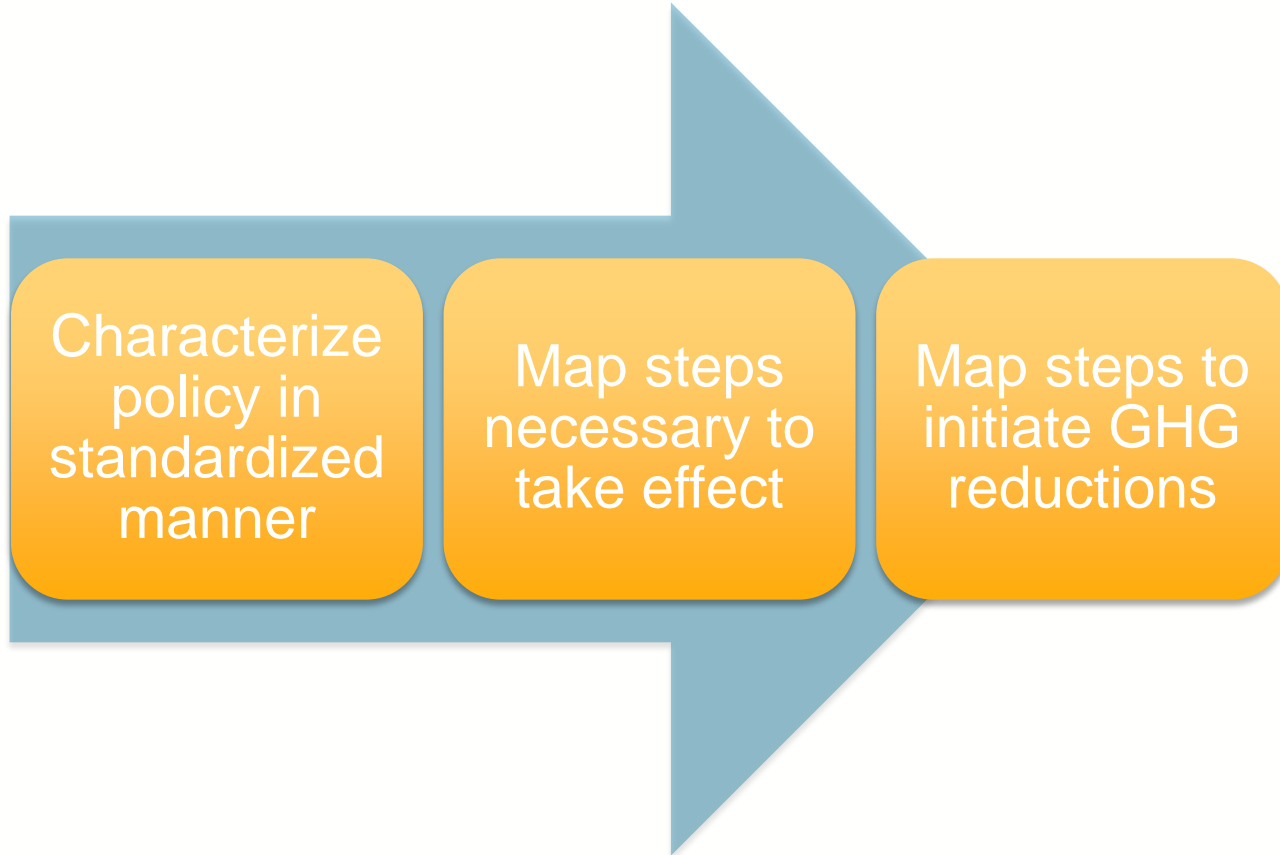
Track implementation status over time

Clarify steps toward policy adoption

Clarify steps toward policy effect

Highlight key decision points

Policy Implementation Tracking Tool



POLICY PROCESS FOR NEW POWER PLANTS

● Completed ○ Not Completed

U.S. EPA entered into a settlement agreement to develop performance standards for new units and mandatory guidelines for existing units in response to a lawsuit filed under the previous administration

U.S. EPA held listening sessions to get information from stakeholders about how to best regulate the sector

U.S. EPA proposes performance standards for new units

U.S. EPA holds public comment period on proposed standards

Comment period ends

U.S. EPA evaluates comments and finalizes performance standards with response to comments

Performance standards go into effect



POLICY PROCESS FOR EXISTING POWER PLANTS

● Completed ○ Not Completed

U.S. EPA proposes mandatory guidelines for existing units

U.S. EPA holds public comment period on proposed mandatory guidelines

U.S. EPA evaluates comments and finalizes mandatory guidelines with response to comments

States develop regulations or legislation to meet EPA's mandatory guidelines, and submit that plan to EPA. States must hold at least one public hearing before submitting their plan to EPA.

U.S. EPA evaluates state plans and either accepts state proposal or finds state proposal unacceptable and implements a federal plan

State regulations or legislation goes into effect



Policy Evaluation & Diagnostic Tool

Evaluate policy design & implementation from an institutions standpoint

Identify barriers and good practices

Create actionable recommendations

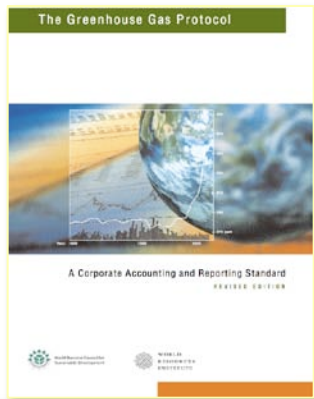
Policy Evaluation & Diagnostic Tool

	Finance	Administration	Monitoring, Reporting, & Revision	Compliance & Enforcement
Roles & Responsibilities				
Transparency				
Coordination				
Stakeholder Participation				
Capacity				



Sector-Specific

GHG Protocol Corporate Standard



Sector-specific tools

Adipic Acid

Aluminum

Ammonia

Cement

HCFC-22

Iron & Steel

Lime

Nitric Acid

Pulp & Paper

Refrigeration & A/C

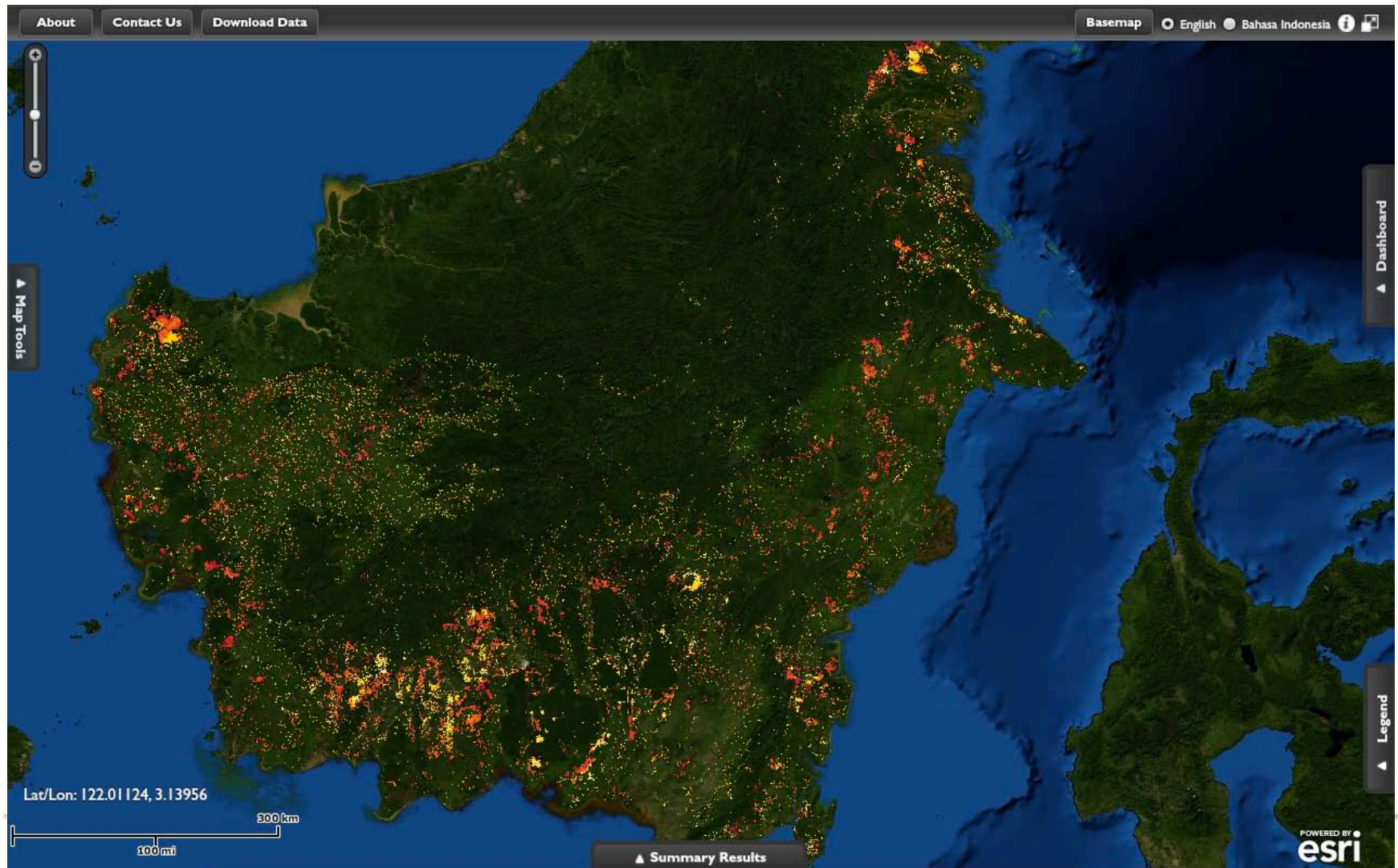
Semiconductors

Wood Products

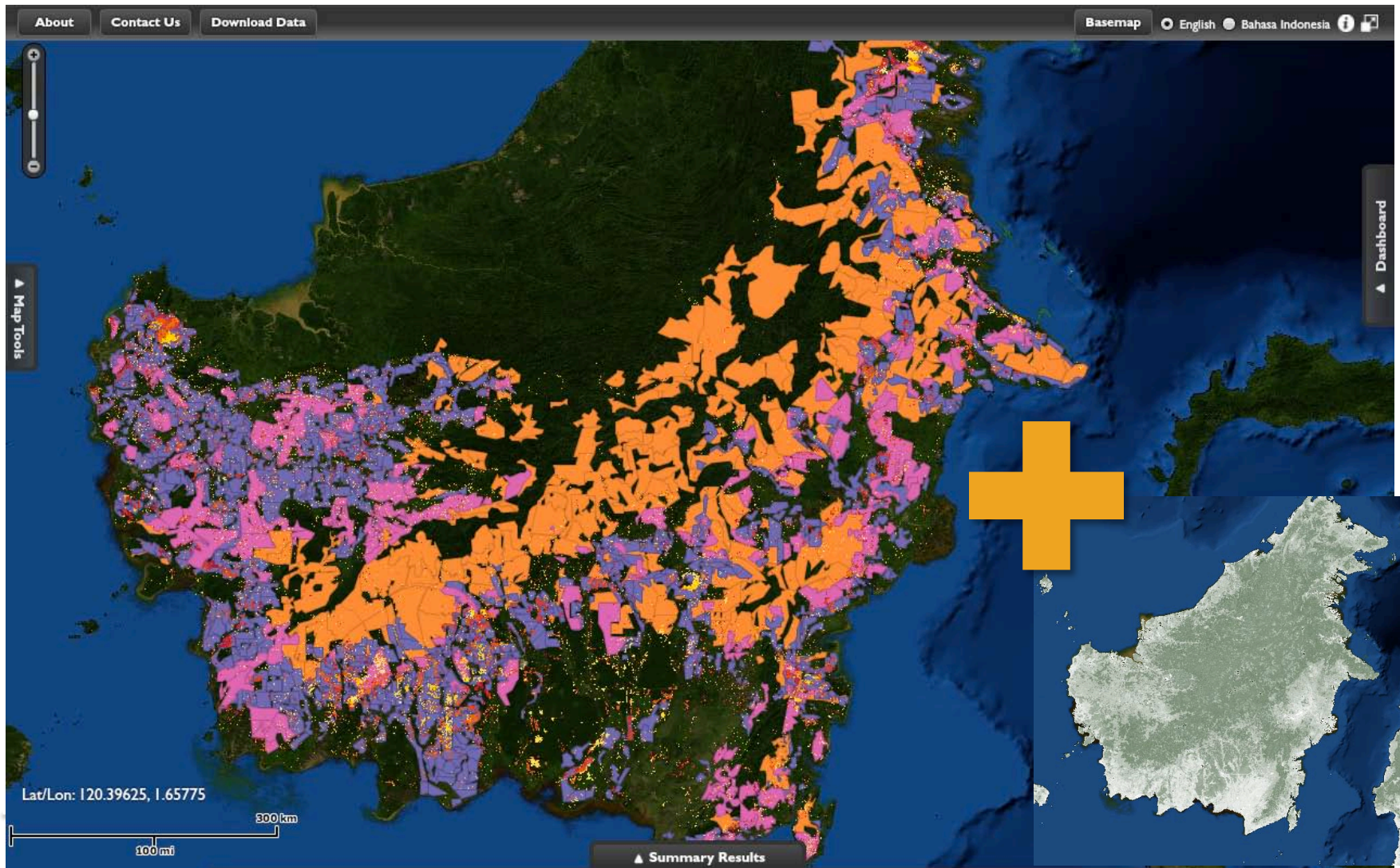
Service Sector

Corporate Standard

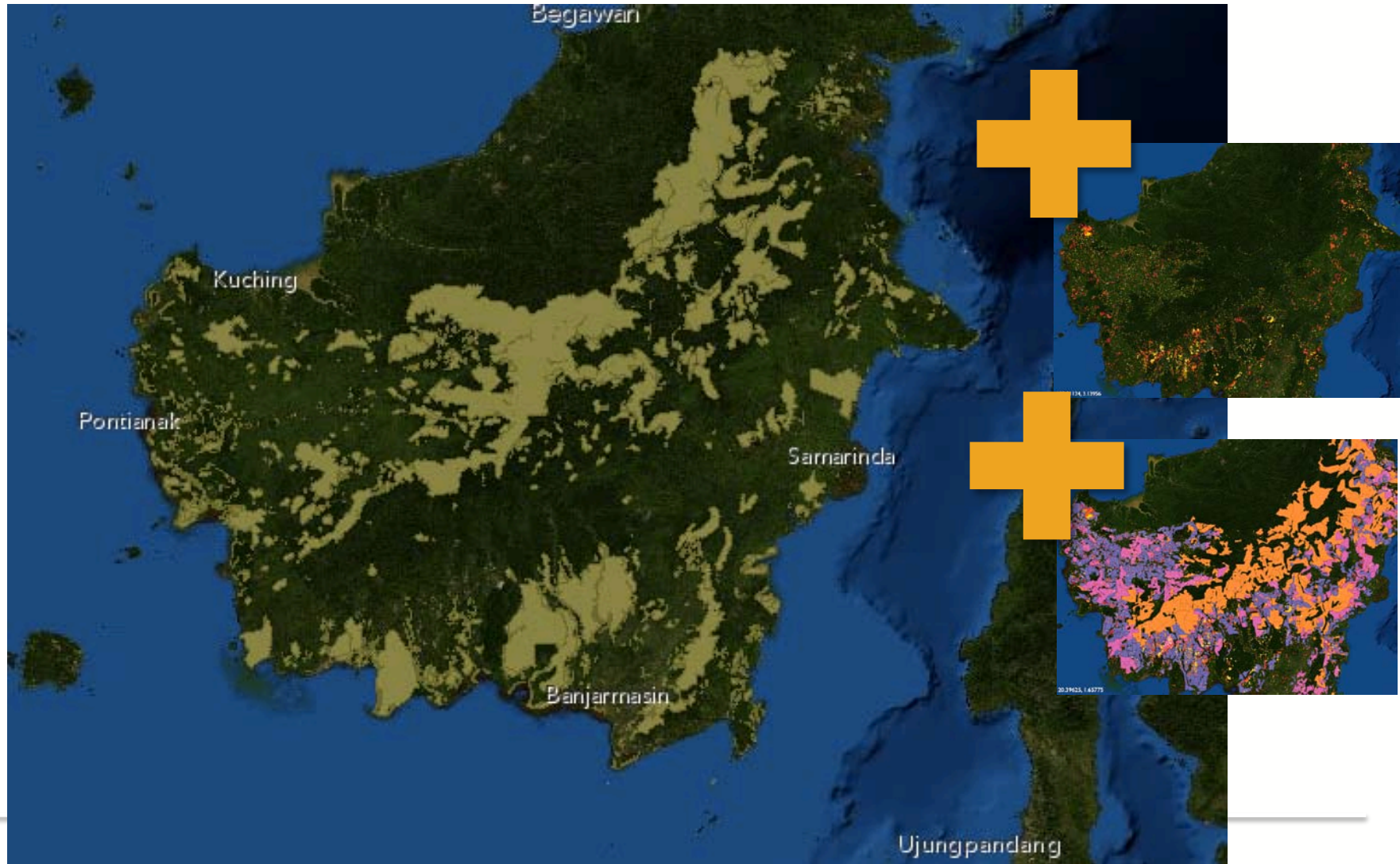
WRI Policy Tracking in Indonesia: Forests & Land Use



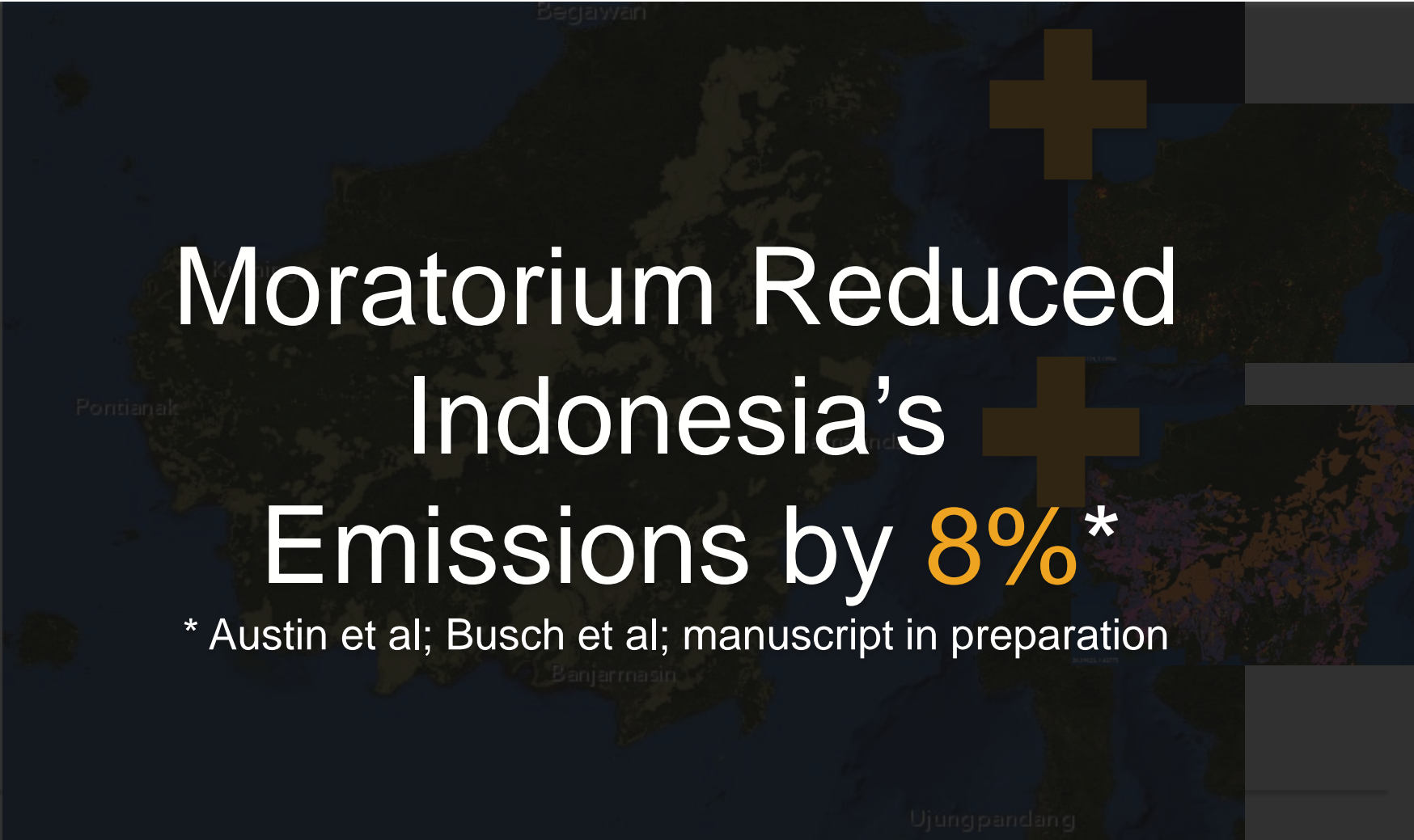
WRI Policy Tracking in Indonesia: Forests & Land Use



WRI Policy Tracking in Indonesia: Tracking the Moratorium



WRI Policy Tracking in Indonesia: Tracking the Moratorium



Moratorium Reduced
Indonesia's
Emissions by **8%***

* Austin et al; Busch et al; manuscript in preparation



WORLD
RESOURCES
INSTITUTE

Thank you!

tfransen@wri.org
