

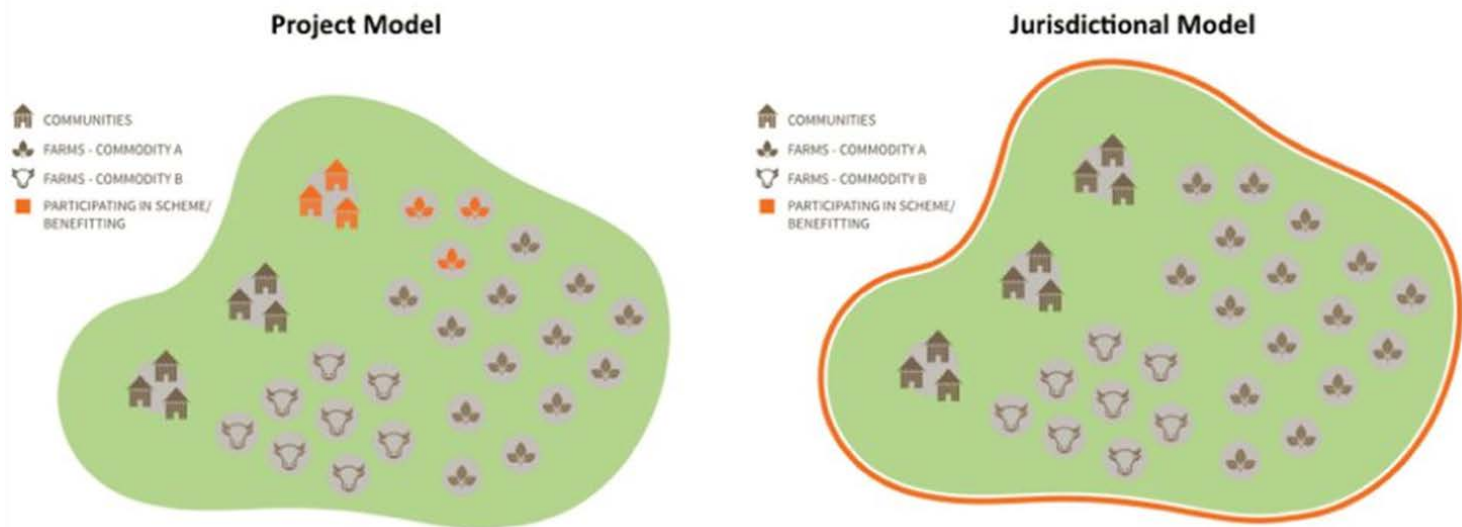
Report Back Session 1 A
21 - 22 November 2018



Jurisdictional Innovation to Unlock the Potential of Tropical Forests as a Climate Change Solution



- Jurisdictional approach is a type of integrated landscape management, with an important distinguishing feature, the landscape is defined by policy-relevant boundaries and the underlying strategy is designed to achieve a high level of governmental involvement (Stickler et al, 2018)
- Under the jurisdictional model :
 - entire jurisdiction would be rewarded for reducing emission from deforestation
 - benefit sharing mechanisms that could potentially reach broader group of stakeholders
- The 39 subnational jurisdictions in 12 countries studied : 28% of the world's tropical forests and vary widely in both their deforestation rates and the amount of their forest that is remaining

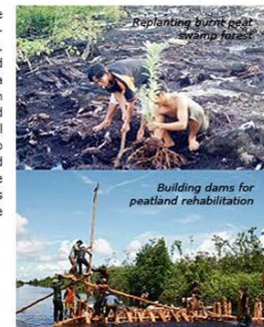


- Indigenous and local community should be part of benefit sharing and sub program
- The lesson learned from REDD+ jurisdiction in State of Acre , Brazil : effective participation of all social segments and at all phases provides stability and legitimacy
- There is a new concept of a tendency for replicating principles and criteria at the plantation level to the jurisdiction level :
 proposing of application of the RSPO (Roundtable for Sustainable Palm Oil) principles and criteria at the level of the jurisdiction
- Driving forces in sub national jurisdiction : local wisdom, political dynamic of the local, benefit for the community



Community-based peat restoration in Indonesia

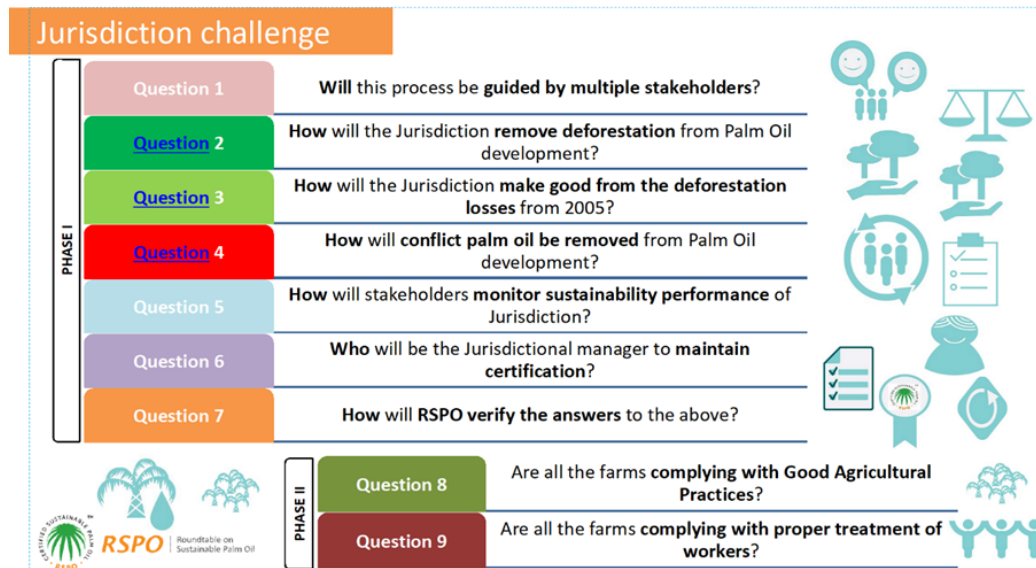
Local communities in Central Kalimantan, Indonesia have traditionally depended, for their livelihoods, on fish and non-timber forest products from the extensive peat swamp forests. They have been severely impacted by the clearance and degradation of peatlands, for example, the failed 1-million ha Mega-Rice Scheme abandoned in 1999 after 500,000 ha burnt in the 1997-98 El Niño events. The Climate Change, Forest and Peatland in Indonesia (CCFPI) Project assisted the local communities to block the abandoned drainage channels and to rehabilitate the peatlands. This has led to reductions in fires and ORO emissions and improvements in fish harvests. The restoration techniques developed - drawing on indigenous knowledge - have now been adopted for large-scale rehabilitation of peatlands in Indonesia and elsewhere.



- Jurisdictional approach is appropriate because :
 - Coordinated national framework but allows bottom-up, locally derived solutions
 - Encourages close collaboration between government, private sector, NGOs/CSOs and communities
 - Gives responsibility to stakeholders closely involved in forest and land use management, which will play key role in addressing deforestation
- Equity and effectiveness of multi stakeholders forum as an option to solve land use related problems
- Components for accelerating social forestry progress:
 - Village boundary agreement
 - High commitment and participation of local communities
 - Intensive community empowerment by government or NGO

Summary and key findings of the session

- The jurisdictional approach can cover multiple commodities and provide a close link to the REDD+ process
- Sustainability and resilience of a development model are based upon diversification and quality of the production chains
- Benefit sharing prioritizes vulnerable forest people and traditional communities, their empowerment and autonomy, and participation in social and economic development
- Incentives and investments flowing from climate finance could promote a range of benefits, from health to infrastructure to address communities need and aspirations



Concrete/practical actions towards ambitious decarbonized world

- The project level initiative in implementing a range of world-class strategies to reduce CO₂ emissions, protect fragile ecosystems and provide livelihood improvement
- Involving local community and changing the corporate activities to take notice and take actions towards changing their production practices
- Building an active networking, synergy, and strategic partnerships (example public-private-community partnership)





Thank You
Terima Kasih

