

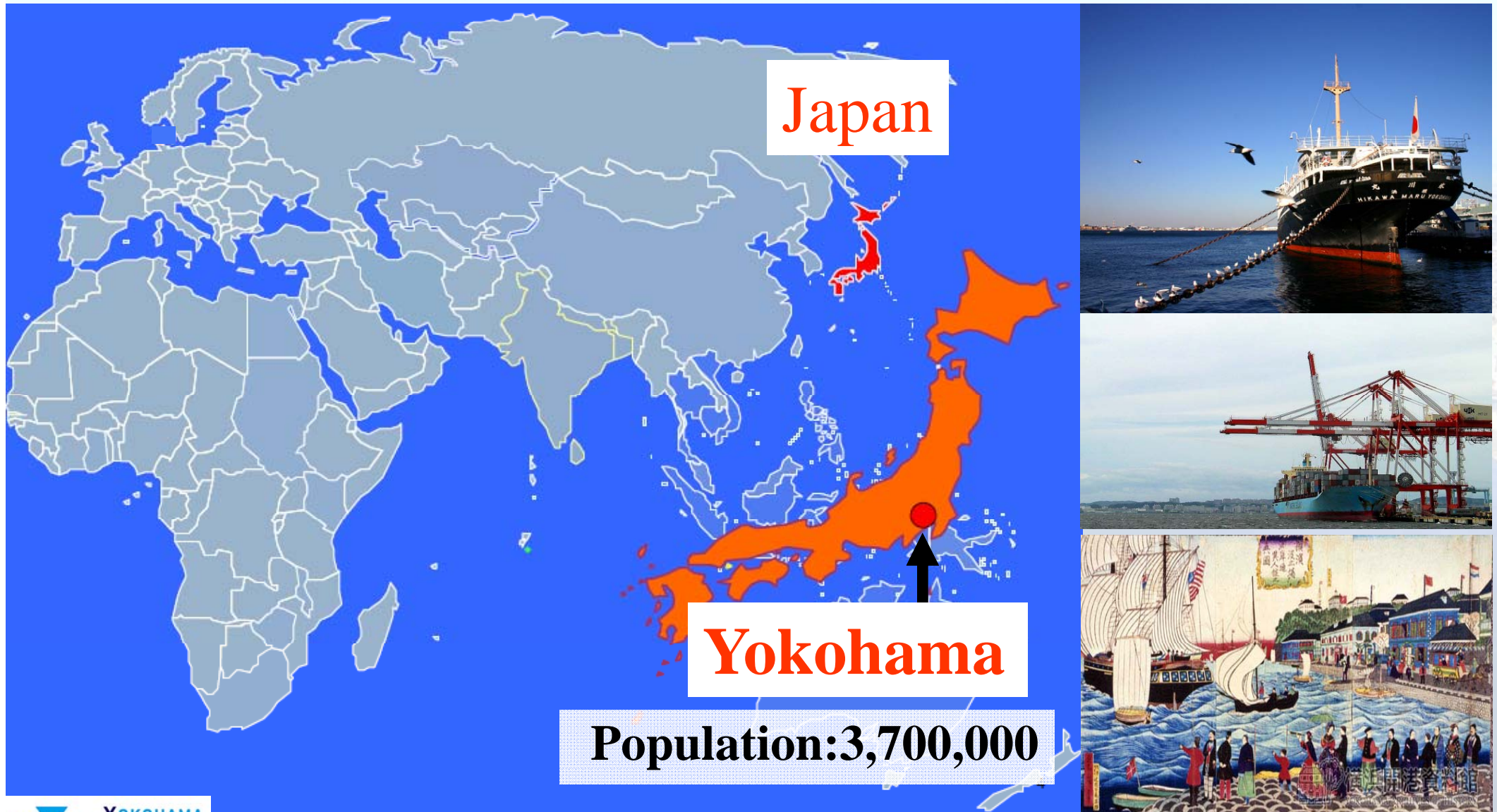
Yokohama Smart City Project



Climate Change Policy Headquarters
City of Yokohama

1. Overview of Yokohama
2. Yokohama Smart City Project (YSCP)

Overview of Yokohama

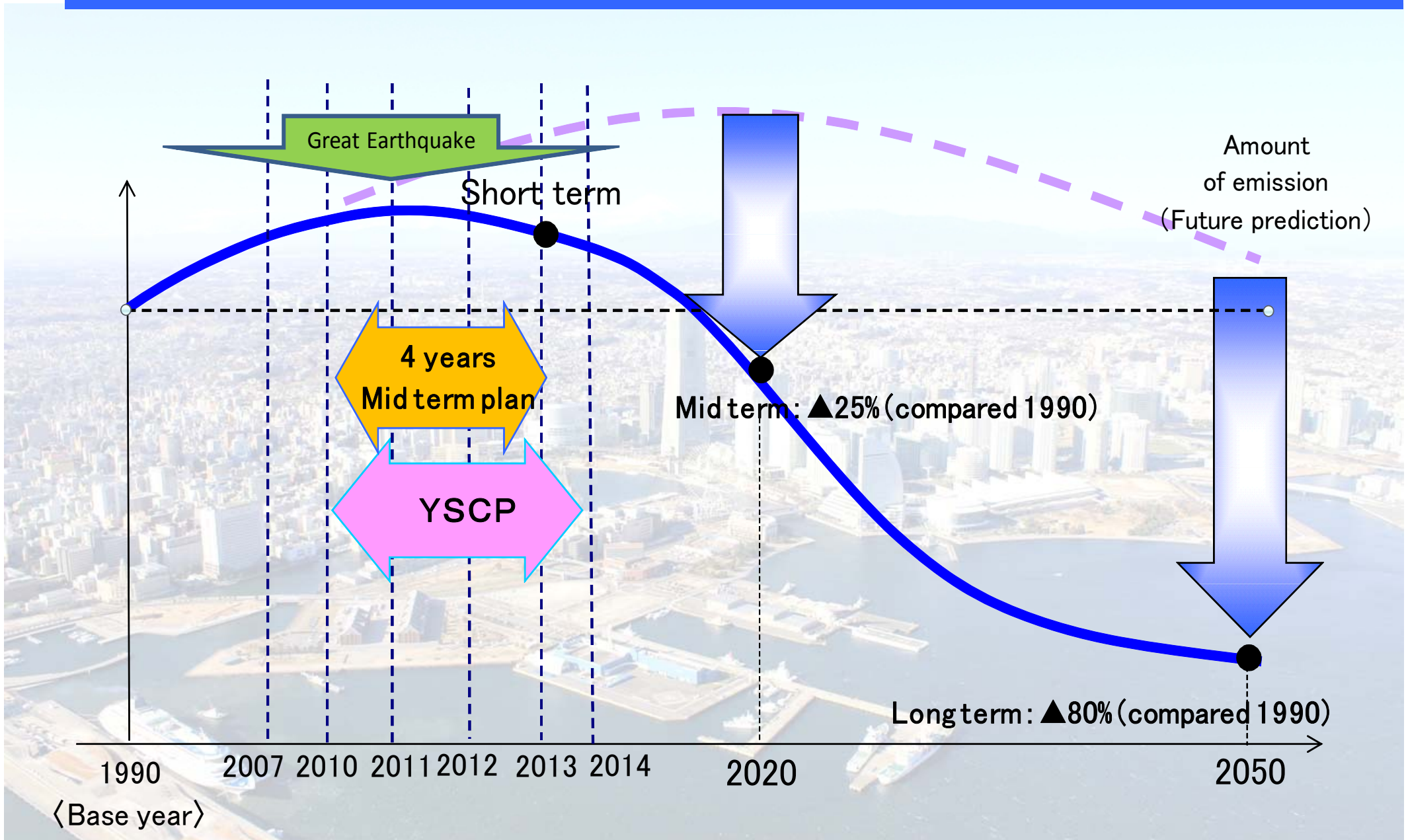


Japan

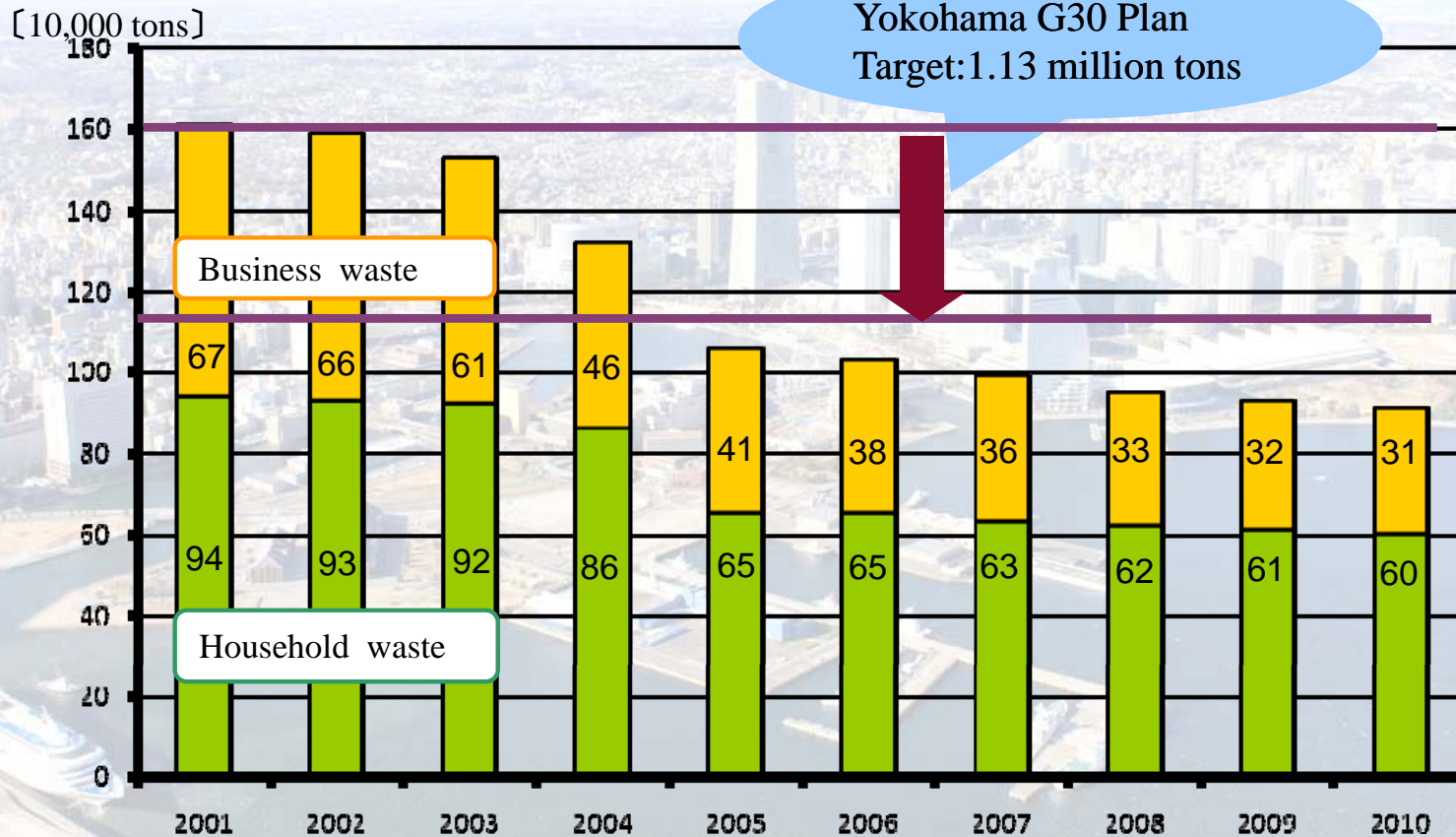
Yokohama

Population: 3,700,000

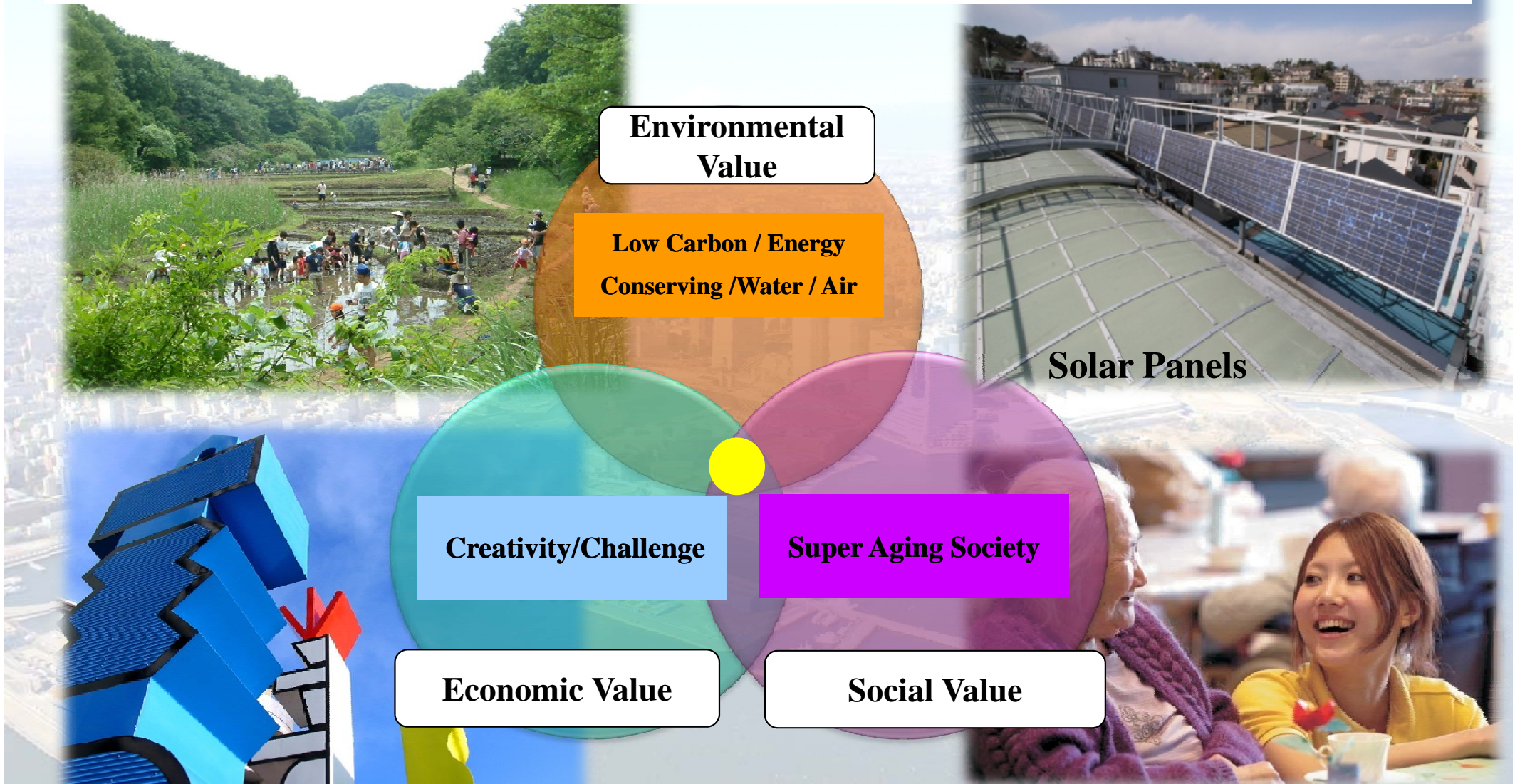
Yokohama City Action Plan for Global Warming Countermeasures



Power of Yokohama Citizens



FutureCity Initiative



Yokohama Smart City Project

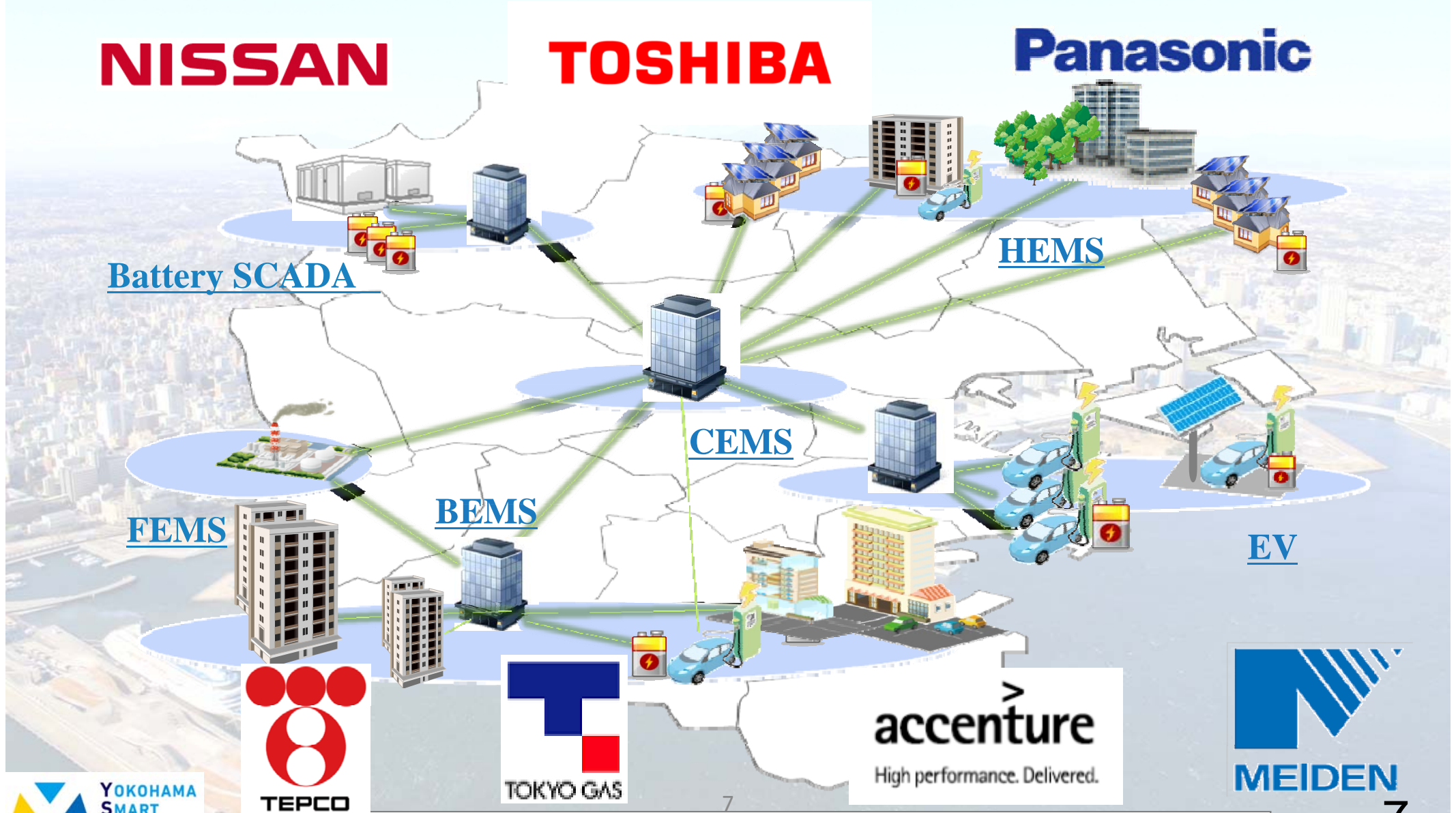


Making Yokohama the World Leading Smart City

NISSAN

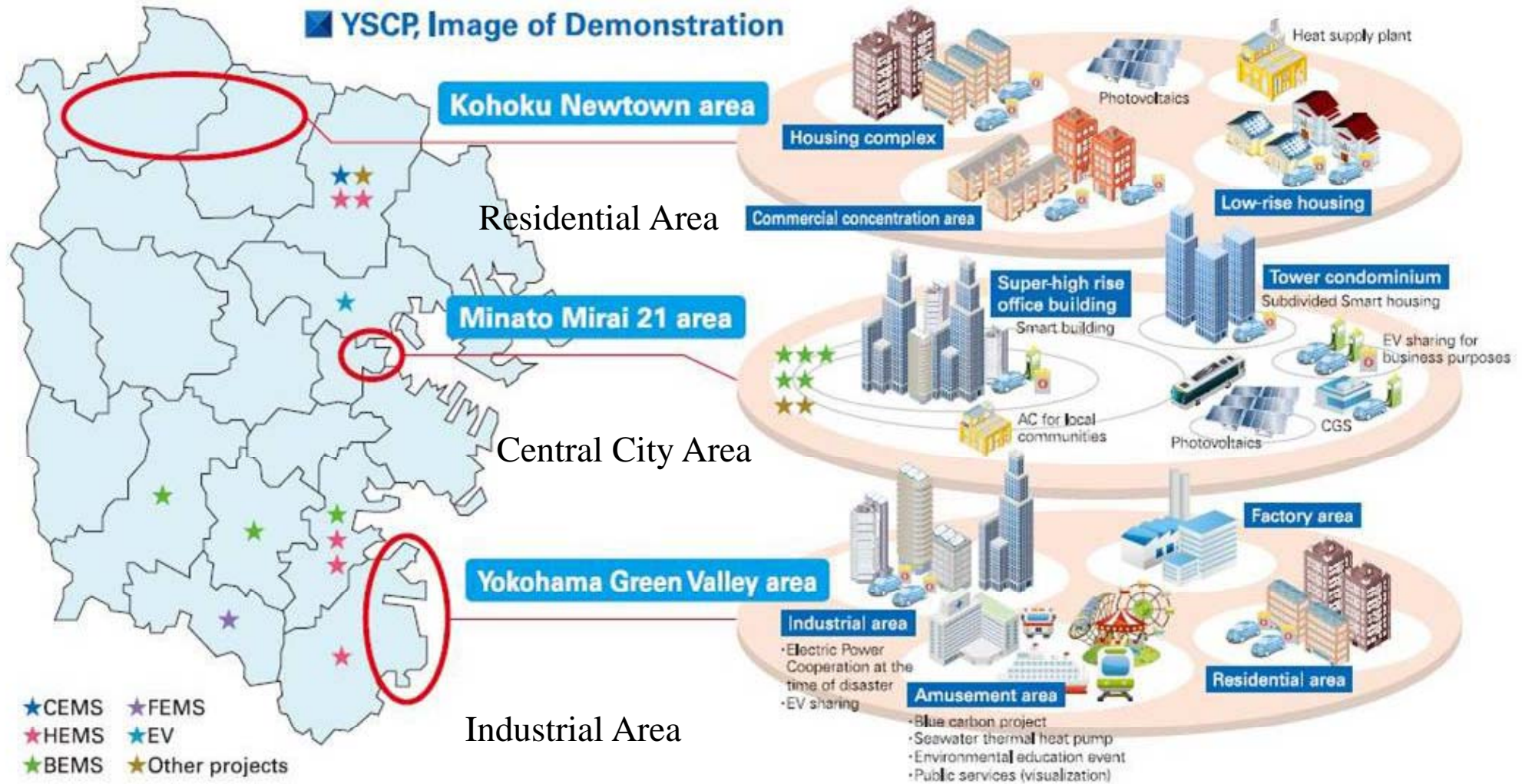
TOSHIBA

Panasonic



Target by 2014: PV27MW,4,000 HEMS Contracts,2,000 Electric Vehicles

Image of Yokohama Smart City Project

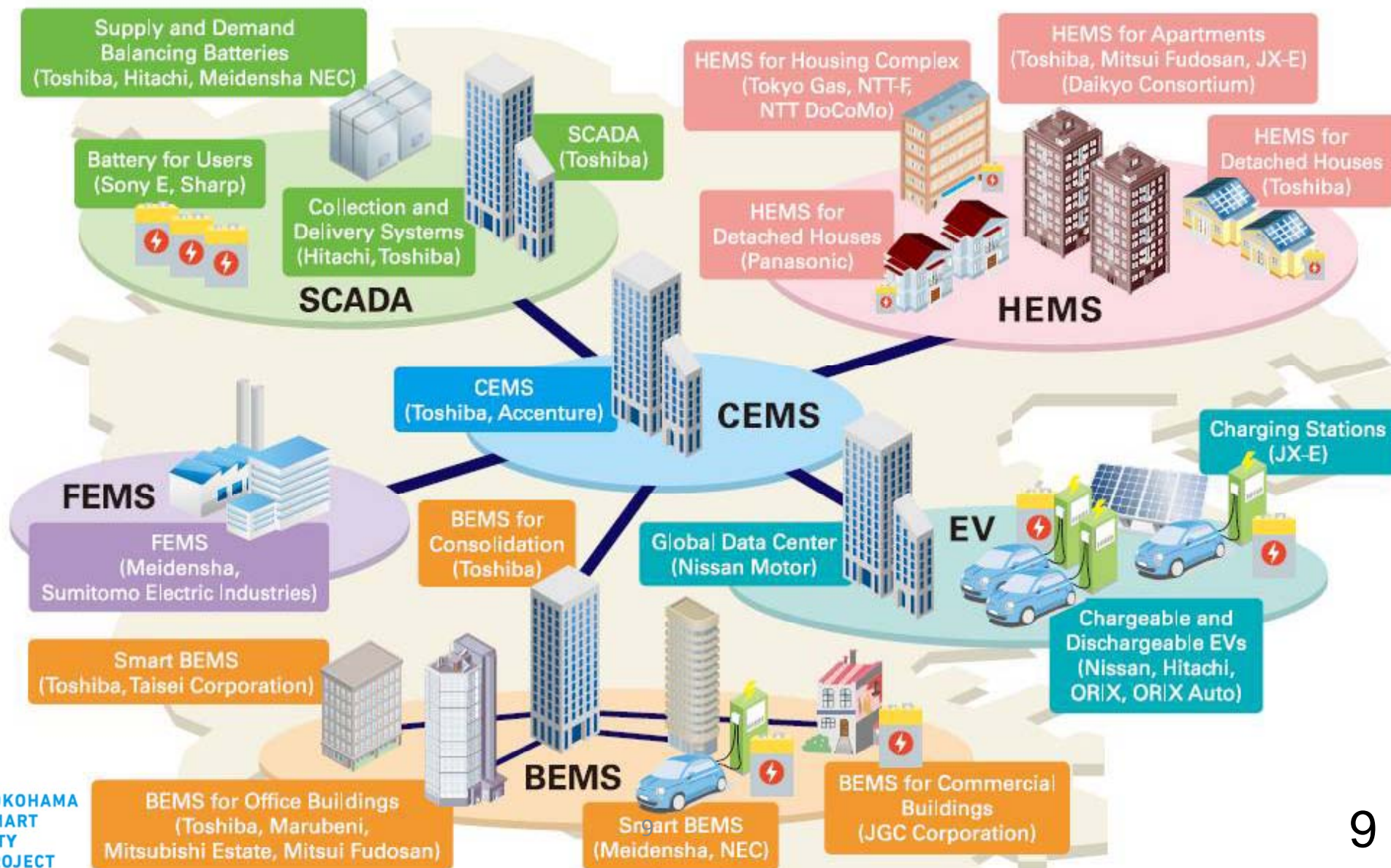


Overview of demonstration experiments

(Energy management systems)

Target by the end of 2014 PV 27MW / HEMS 4,000units / EV 2,000 vehicles

Target by the end of 2012 PV 19MW / HEMS 995units / EV 887 vehicles



HEMS (Home Energy Management System)



Efforts in detached houses

Efforts in Apartments



Demonstration Project participated by local residents

About 1,700 households will participate in YSCP 'Demand Response' demonstration project starting April 2013

Preparing Meeting

Date: October 11-22, 2012 / **Place:** In five wards of Yokohama
Total Participants: 175

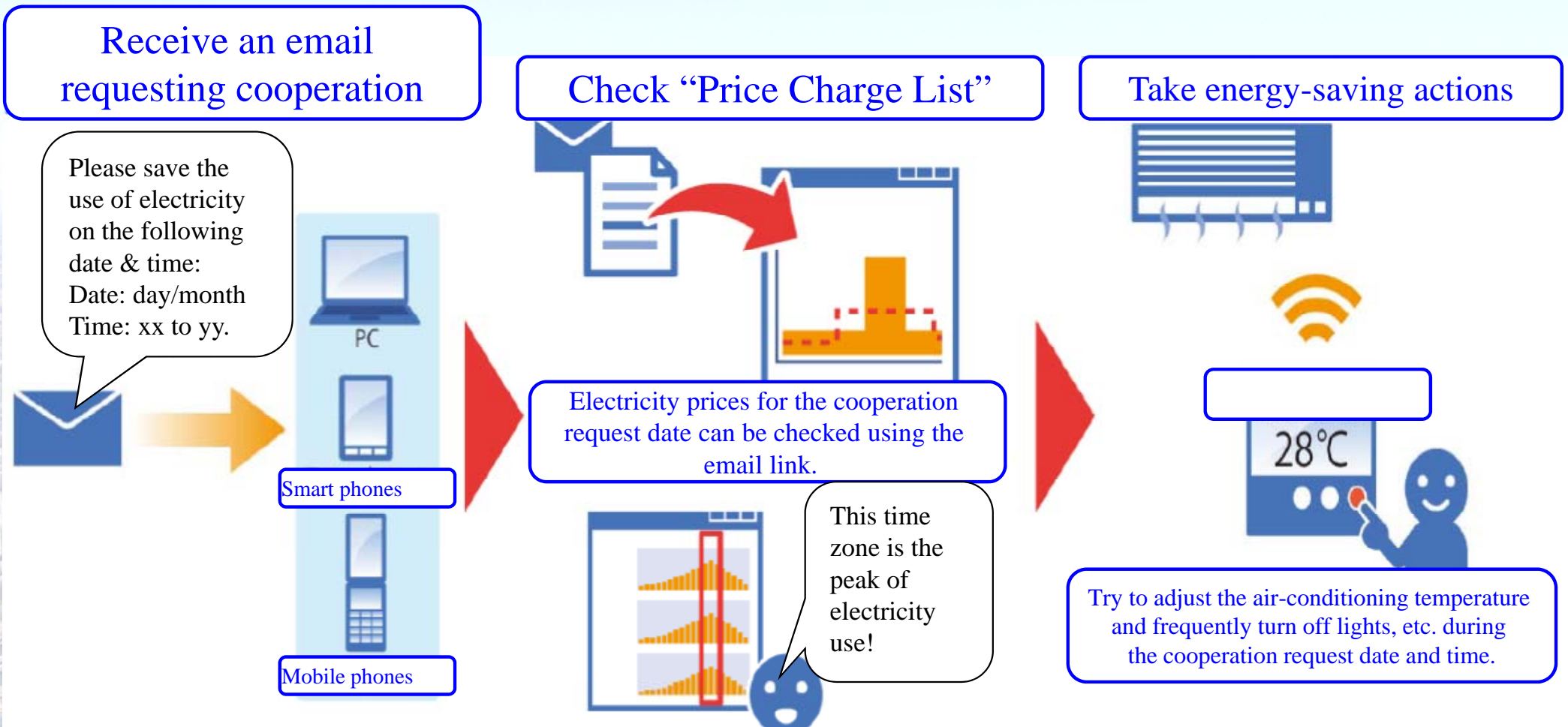


HEMS display: Power supply and demand



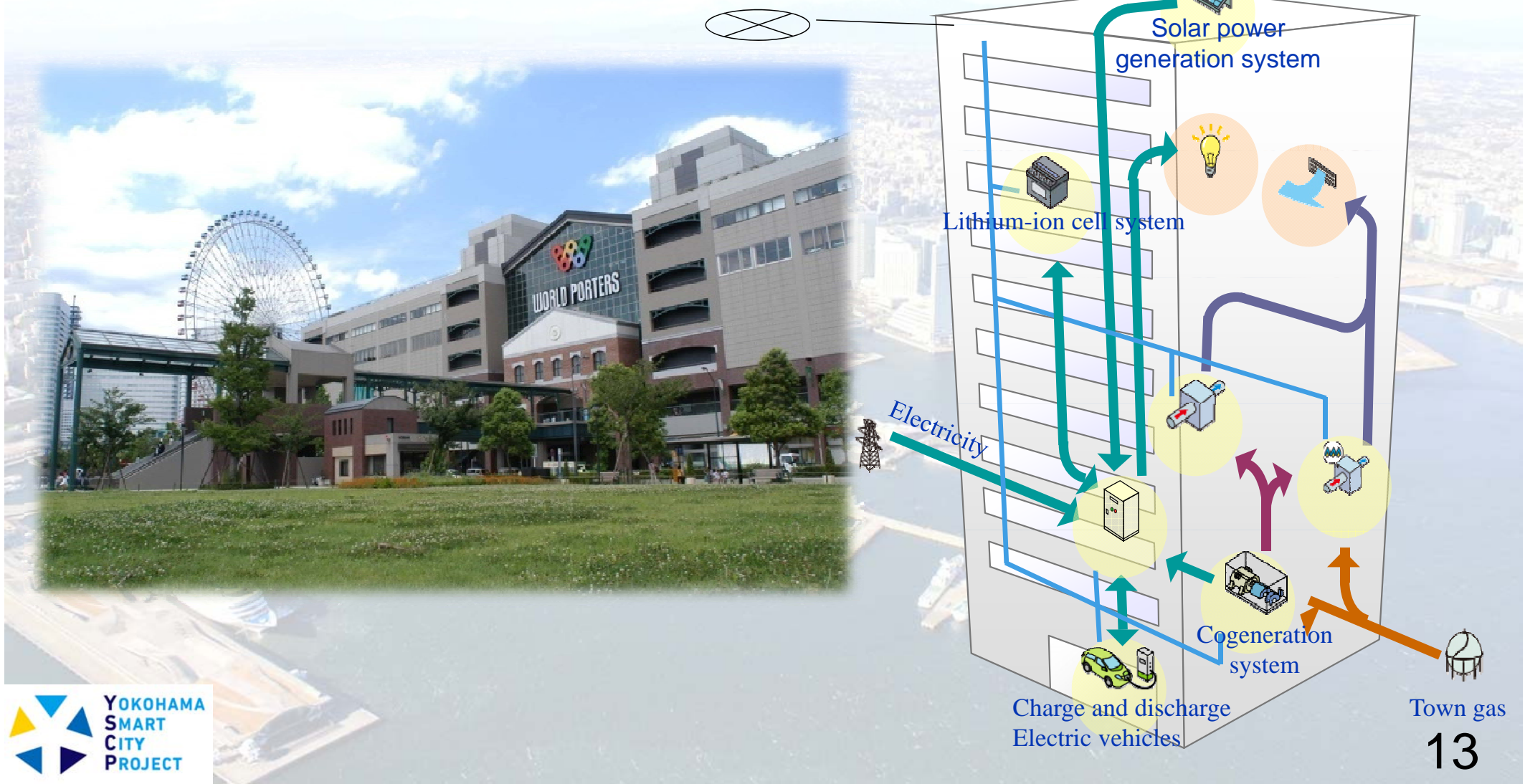
Examples of HEMS Activities

- Flow of Energy-Saving Action Experiments -



BEMS (Building Energy Management System)

CEMS:
Community Energy Management System



Making Yokohama a City of Electric Vehicles

New Mobility Concept



EV sharing in industrial area and shopping district

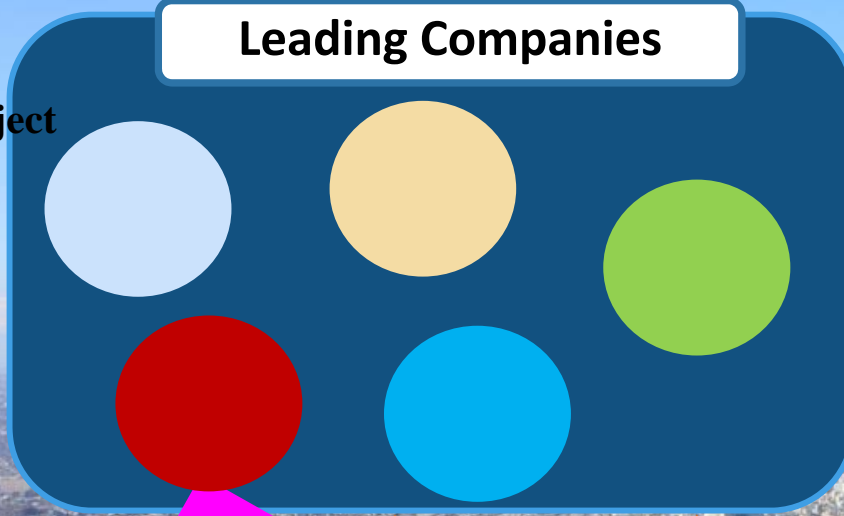
Not only means of transportation, but also function of storage battery



Business Matching between Japanese Leading Companies and SMEs - Job Creation

Yokohama
Smart City Project

Leading Companies

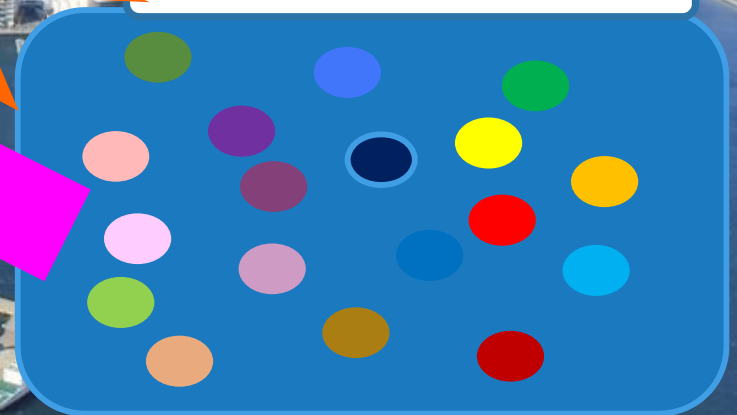


Demonstration of cutting-edge
Technology

New Business
&
Job Creation

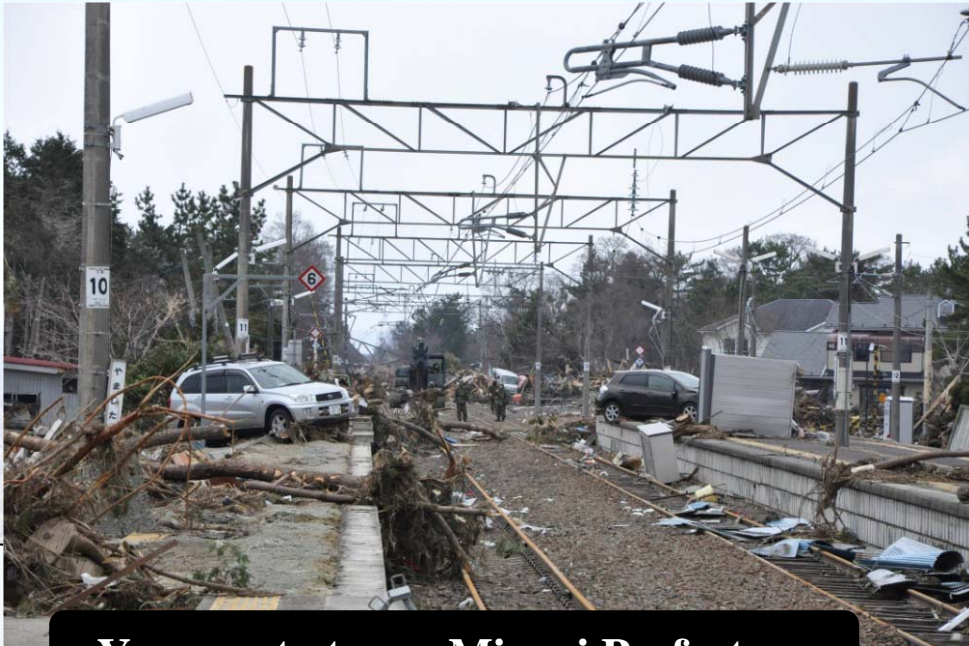
SMEs in Yokohama

Unique Technology
of SMEs



Yokohama Green Valley Project

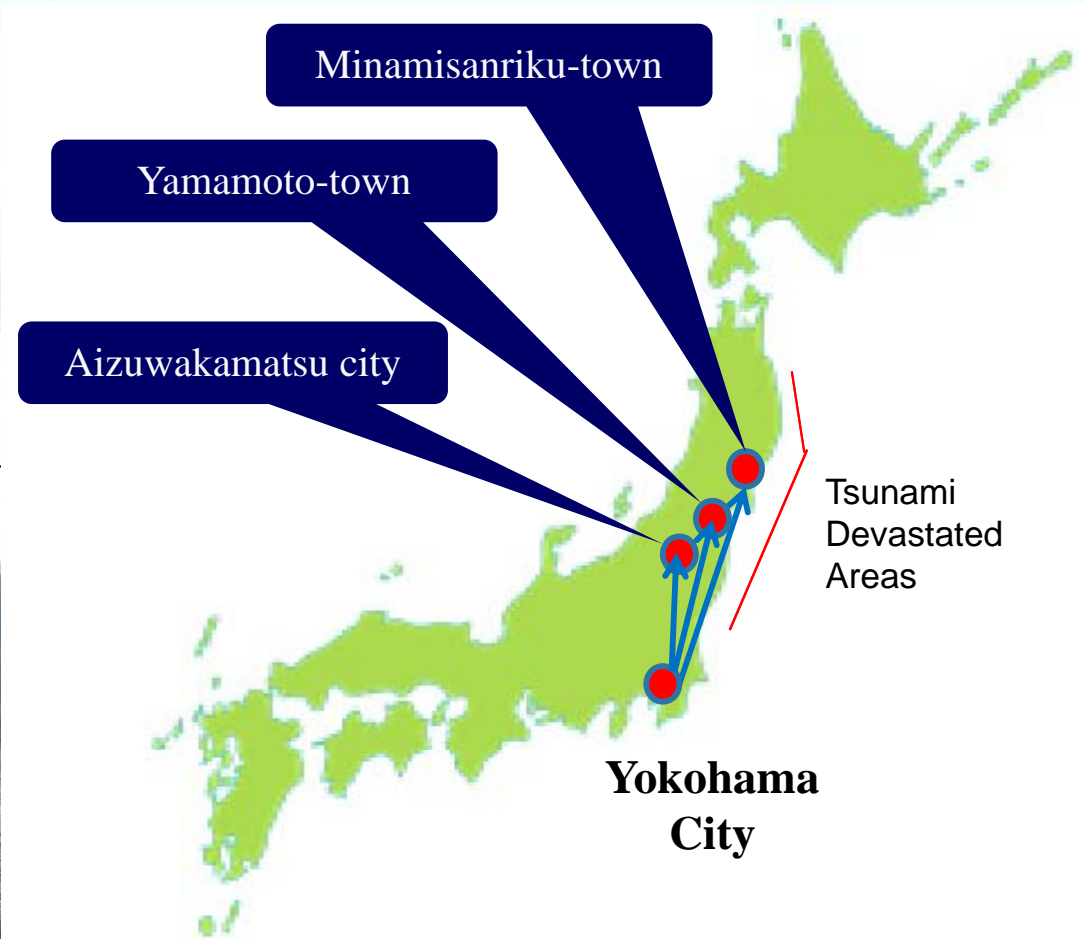
Great East Japan Earthquake - Assistance for disaster areas



Yamamoto town, Miyagi Prefecture



Minamisanriku town, Miyagi Prefecture



City of Yokohama assists disaster areas by joining the advisory boards and developing plans

Contribution for urban problem all over the world



The first 6 “Eco 2 Cities”

Yokohama (Japan) ,Brisbane (Australia)
Curitiba (Brazil), Stockholm (Sweden),
Singapore, Auckland (New Zealand)

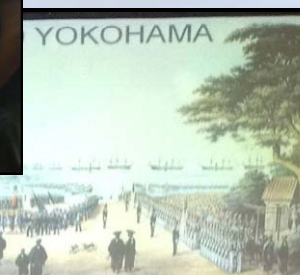


C40: International Group for environmental issue

CITYNET



‘FutureCity’ Yokohama in
Rio de Janeiro, Brazil
(Rio+20, 2012)



Thank you



For Smarter Cities, For a Smarter Earth

