



6th Annual Meeting of the Low Carbon Asia Research Network (LoCARNet)
Century Park Hotel
November 1st, 2017



Thailand's National Adaptation Planning Process (NAP)

Kollawat Sakhakara, Ph.D.

Environmental Official: Senior Professional Level

Climate Change Management Coordination Division

Office of Natural Resources and Environmental Policy and Planning

Ministry of Natural Resources and Environment





Contents



- Thailand's National Adaptation Planning Process (NAP)
- Contribution of ONEP-CITC Collaboration Project



Thailand's National Adaptation Planning Process (NAP)



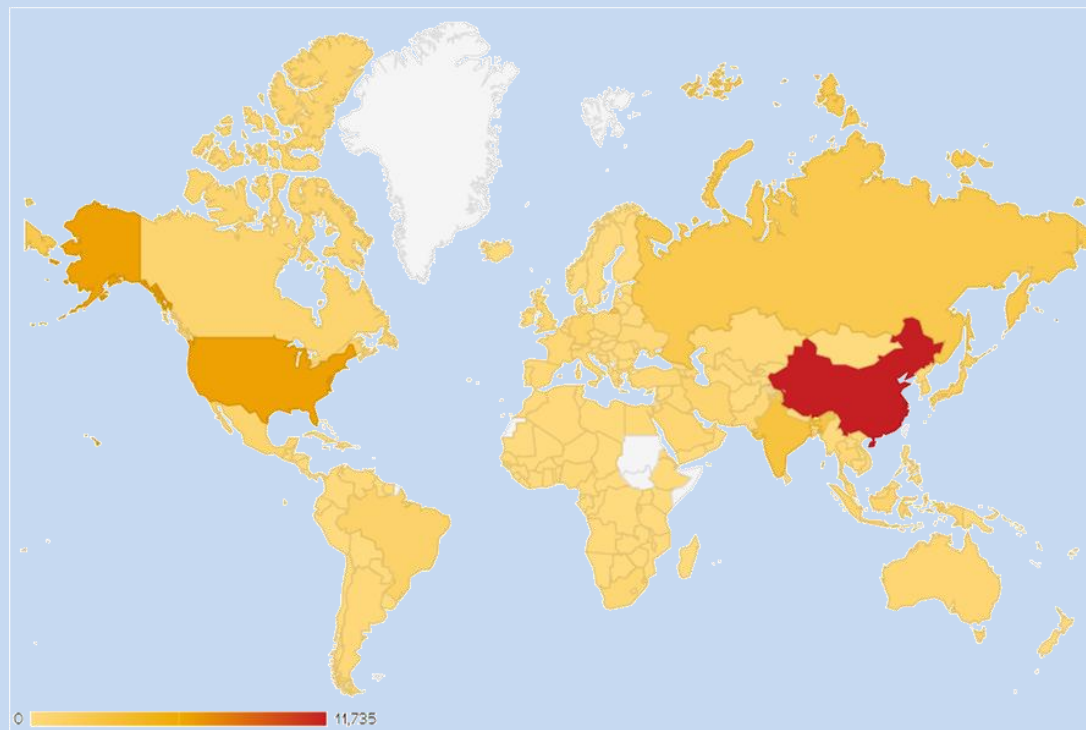


Thailand's National Adaptation Planning Process



Rank	Country	MtCO ₂ e
1	China	11735.0071
2	United States	6279.8362
3	European Union (28)	4224.5217
4	India	2909.0566
5	Russian Federation	2199.1173
6	Japan	1353.3473
7	Brazil	1017.8745
8	Germany	894.057
9	Indonesia	744.3403
10	Canada	738.3825
11	Mexico	733.0104
12	Iran	716.8149
13	Korea, Rep. (South)	673.5412
14	Australia	580.0997
15	Saudi Arabia	546.8181
16	United Kingdom	546.2641
17	South Africa	510.2377
18	France	440.8485
19	Italy	420.8244
20	Turkey	408.4574
21	Ukraine	375.667
22	Thailand	369.431
23	Poland	361.1905
24	Argentina	334.2374
25	Pakistan	326.774

Total GHG Emissions Excluding Land-Use Change and Forestry - 2013 (MtCO₂e)



Source: World Resources Institute

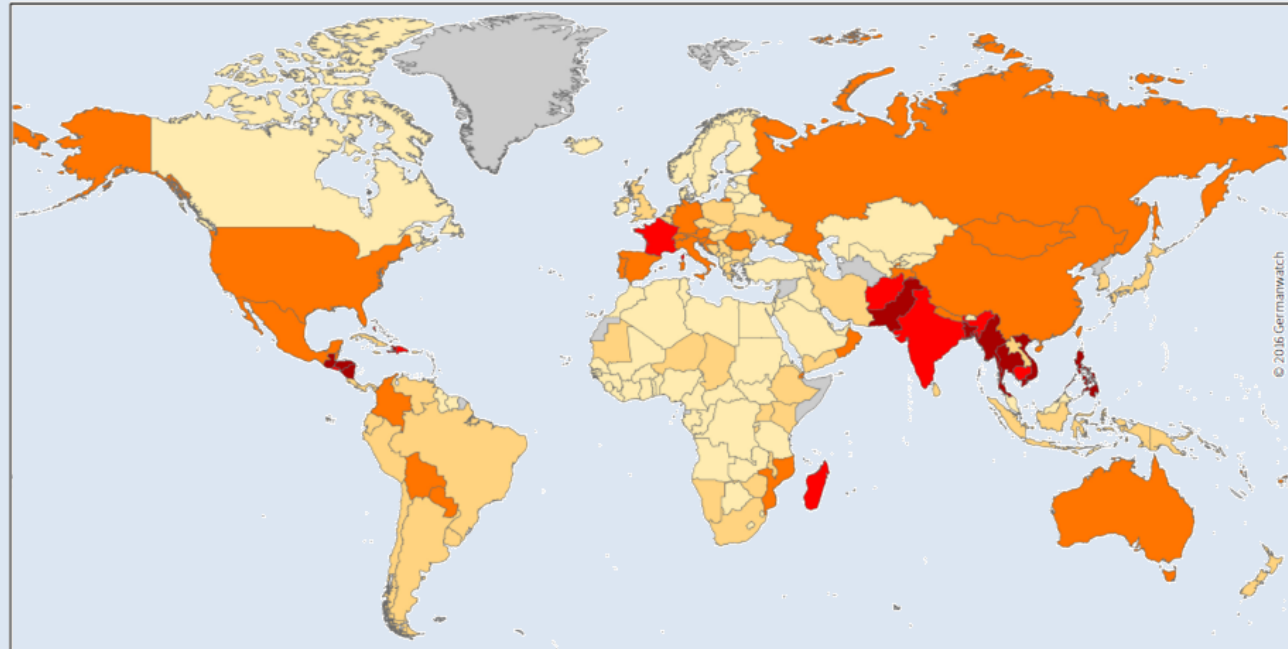


Thailand's National Adaptation Planning Process



World Map of the Global Climate Risk Index 1996–2015

Countries most affected by extreme weather events (1996–2015)	
1	Honduras
2	Myanmar
3	Haiti
4	Nicaragua
5	Philippines
6	Bangladesh
7	Pakistan
8	Vietnam
9	Guatemala
10	Thailand



Italics: Countries where more than 90% of the losses/deaths occurred in one year/event

Climate Risk Index: Ranking 1996–2015

1–10	11–20	21–50	51–100	>100	No data
------	-------	-------	--------	------	---------

Source: Germanwatch and Munich RE NatCatSERVICE

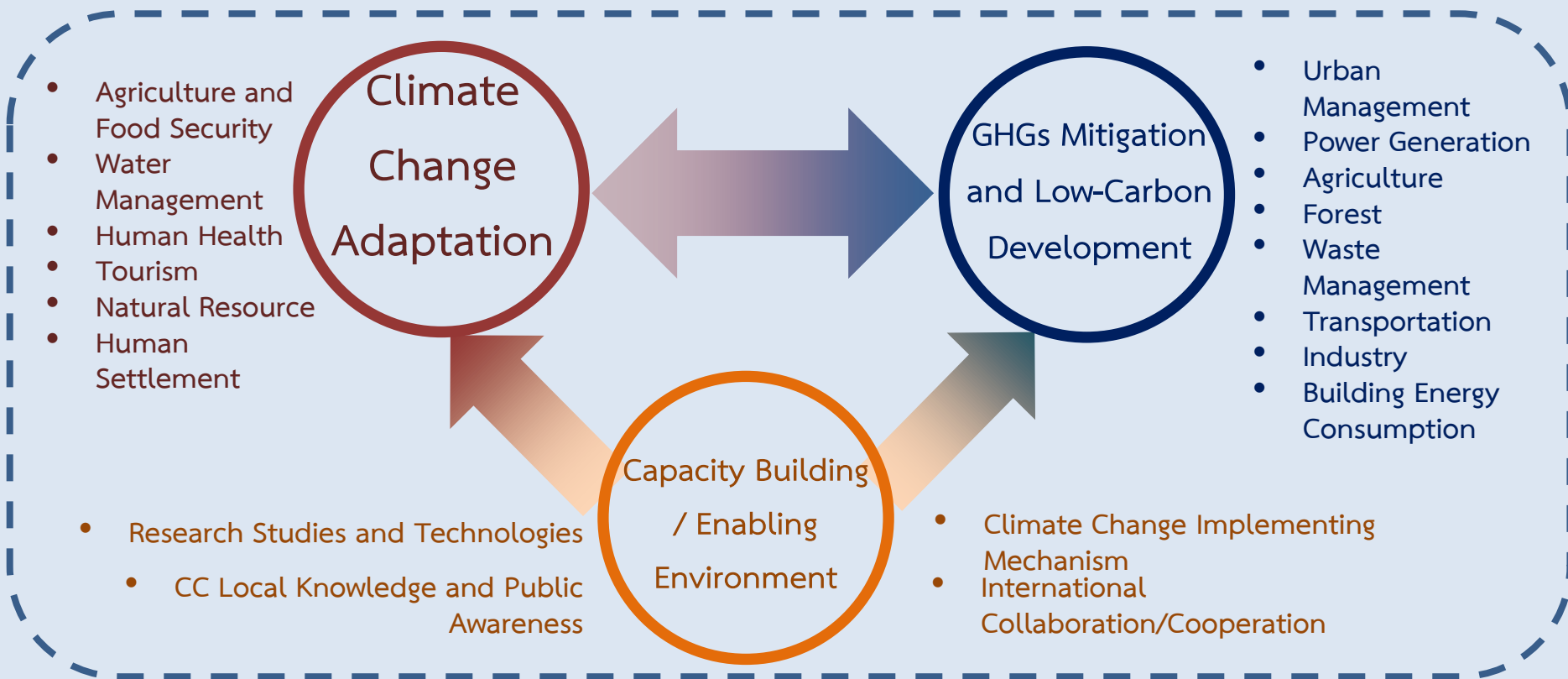


Climate Change Master Plan 2015-2050



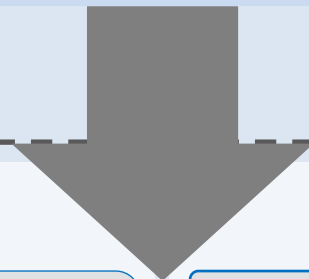
Vision 2050

“Thailand becomes a Climate Change Resilient and Low-Carbon Development Society
Following Sustainable Development Pathway”





CCMP 2015-2050



Drafted NAP

Local Mainstreaming (4 Pilot areas)

1. Chiang Rai Province
2. Central Chao-praya river basin
3. Udon-tani Province
4. Andaman Cluster

Ministerial Policy Integration

- | | |
|--|---|
| 1. MOAC
 | 2. MOH
 |
| 3. MOI
 | 4. MOTS
 |

NDC Roadmap

Energy Consumption

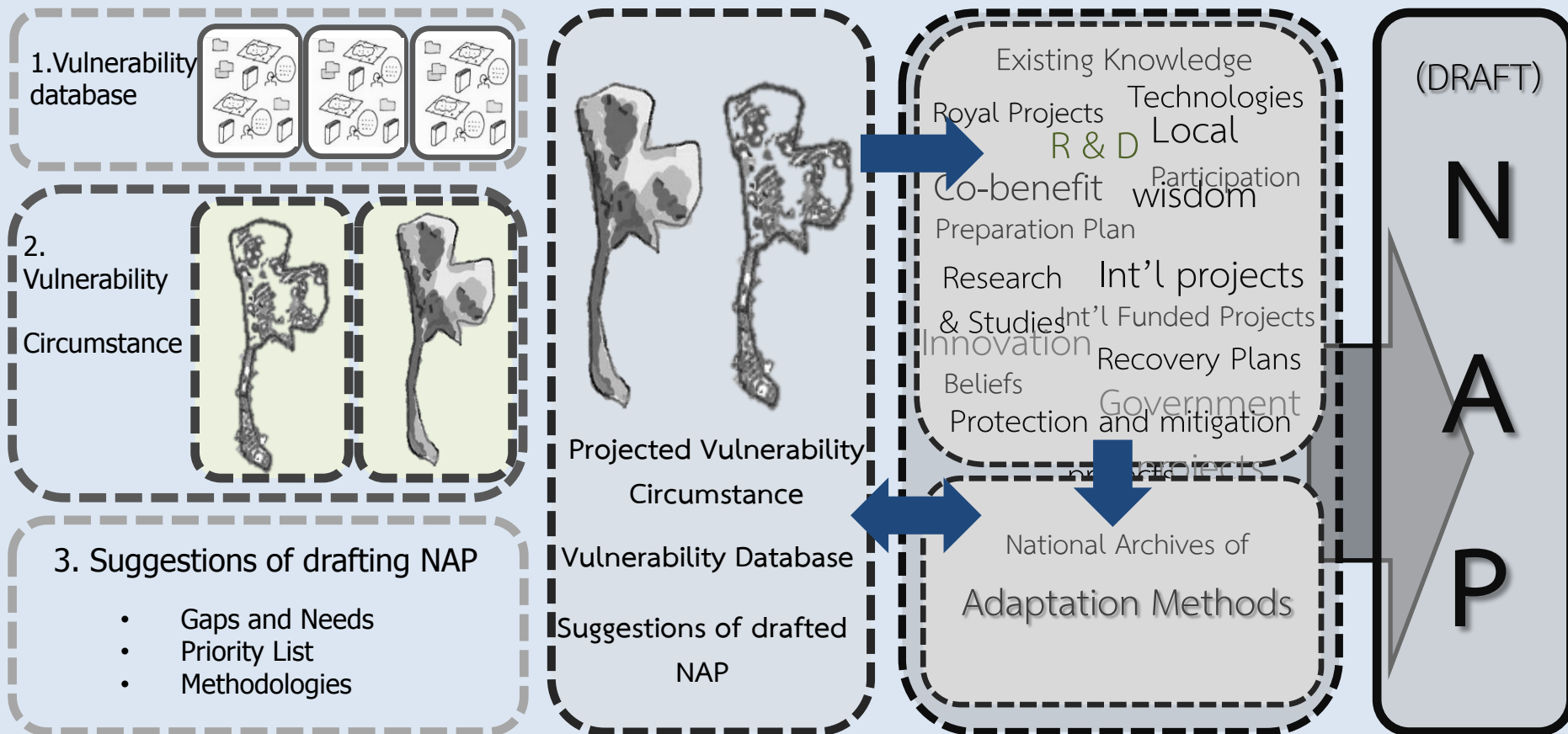
Waste

IPPU

- Renewable Energy Development Plan 2015-2036
- Energy Conservation Plan 2015-2036
- Power Development Plan 2015-2036 (PDP2015)
- Smart Grid Development Plan 2015-2036
- Master Plan of Sustainable Transport Development & Climate Change Mitigation
- Master Plan of Industry Development 2012-2031
- Master Plan of Waste Management 2016-2021
- ETC.



Thailand's National Adaptation Planning Process





Thailand's National Adaptation Planning Process



2015-16

2017

2018-2021

- ☒ 1. VA Report
- ☒ 2. 1st Draft NAP

The improvement of 1st drafted NAP

- ☒ 1. Identification of sectorial Vulnerability based on geographical locations
- ☒ 2. Databases of adaptation options
- ☒ 3. Framework of NAP implementation

- ☒ 1. Working group formation
- ☒ 2. Pilot areas implementation of drafted NAP
- ☒ 3. Integration of drafted NAP in priority sectors
- 4. Development of M&E framework

- 1. Final drafted NAP (2561)
- 2. Guideline of NAP implementation
- 3. NAP Approved by NCCC
- 4. Database and M & E system
- 5. Implementation of 1st NAP

- 1. Ministerial plans integration
- 2. Mainstream in Local plans and actions
- 3. Research and development centers
- 4. Knowledge and training centers
- 5. National CC budgeting system
- 6. Climate change curriculum



Thailand's National Adaptation Planning Process



NAP Formulation Process 2016-17

Approval 2018

NAP Implementation Process 2018-21

1st Drafted
NAP

Final Drafted
NAP

+ M&E
FW

NAP #1 (2018-2021)

Pilot Sectors

Pilot Areas

Imple. GL

Adaptation Options

Risk Maps

Implementation GL

Targets/Baseline Set

M & E Framework

Private Sector

Aware-
-ness

Invest-
-ment

PR

Media

Nat'l-
Agenda

R&D

Pilot areas

Expan-
-sion

Propo-
-sal

Reg. +
Incent

M&E in
progress

Finance
Mech.

Nat'l-Budget

Int'l-Budget

Private Sec.

Cap-Build

REO-PEO

Municipalit

Private

Policy-Maker

Population

UNDP: CCBA

- Economic appraisal tools

JICA: ADAP-T

- 19 area-based research
- Databases and recommendation for policy makers
- Adaptation options

GIZ: Risk-NAP

- Pilot areas (4)
- Pilot sectors (3)
- Guideline for integration
- M & E system

UNDP: NAP-GCF

- Marine-Coastal database
- Pilot areas
- Adaptation options
- Project-based M&E

JICA-TGO: CITC

- Cap-build for PEO & REO
- Training program for municipalities

TRF(MOU)+NRCT

- Alignment of CC research' grant provision
- Disclosure of info and data
- Other academic supports

EU-GSEI

- Community-based training, awareness raising, and adaptation plans



Establishment of fundamental framework and structure for Adaptation implementation of Thailand

6 Strategies

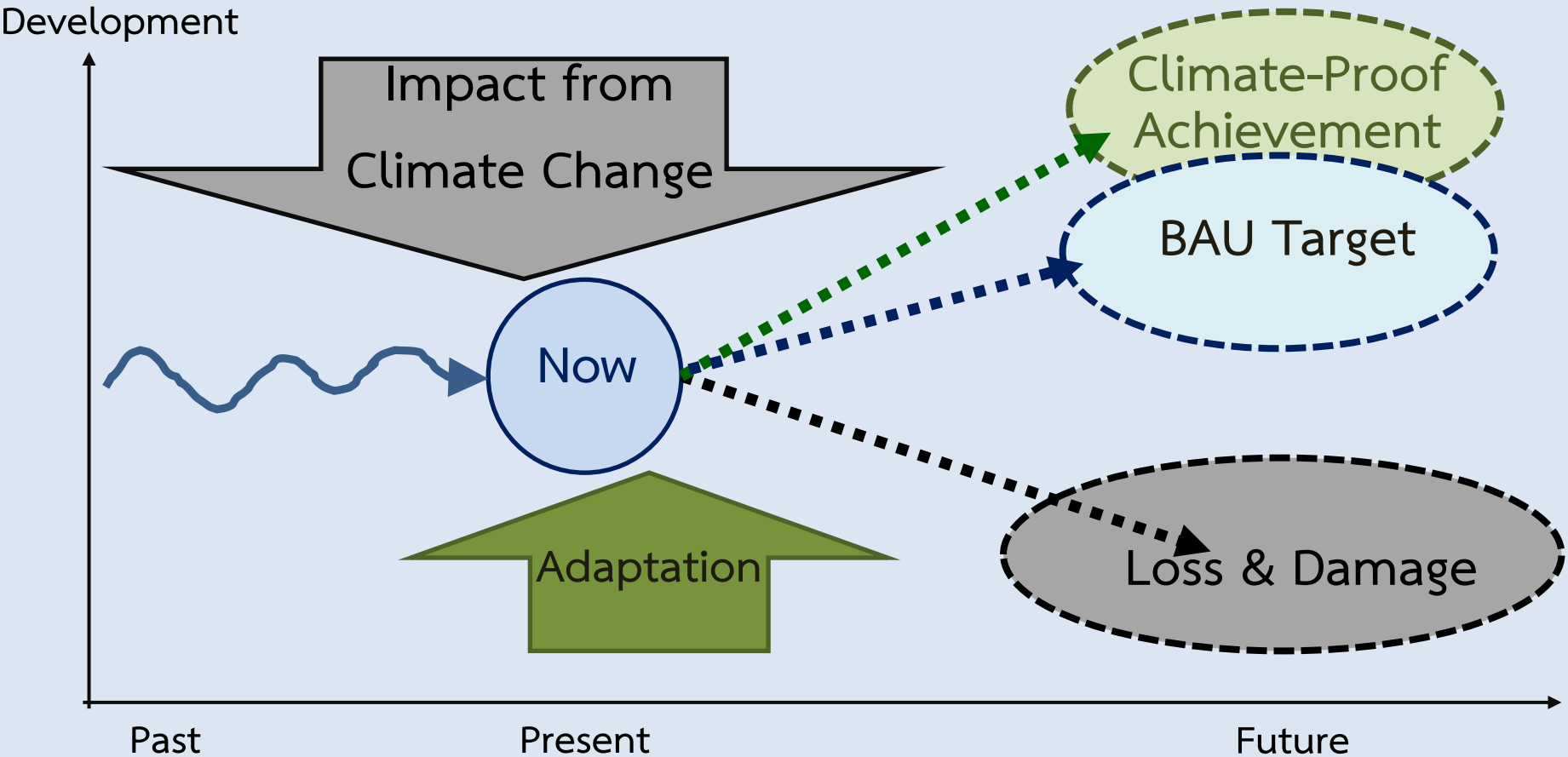
1. Water management
2. Agriculture and food security
3. Tourism management
4. Public health management
5. Natural resources management
6. Human settlement and human security

5 Preparatory Approaches

1. Stakeholder capacity building
2. Database syst., R&D, M&E
3. Multi-sectoral/agency collaboration
4. Institutional arrangement, budgeting/financial system, supporting mechanism
5. Local-Int'l collaboration

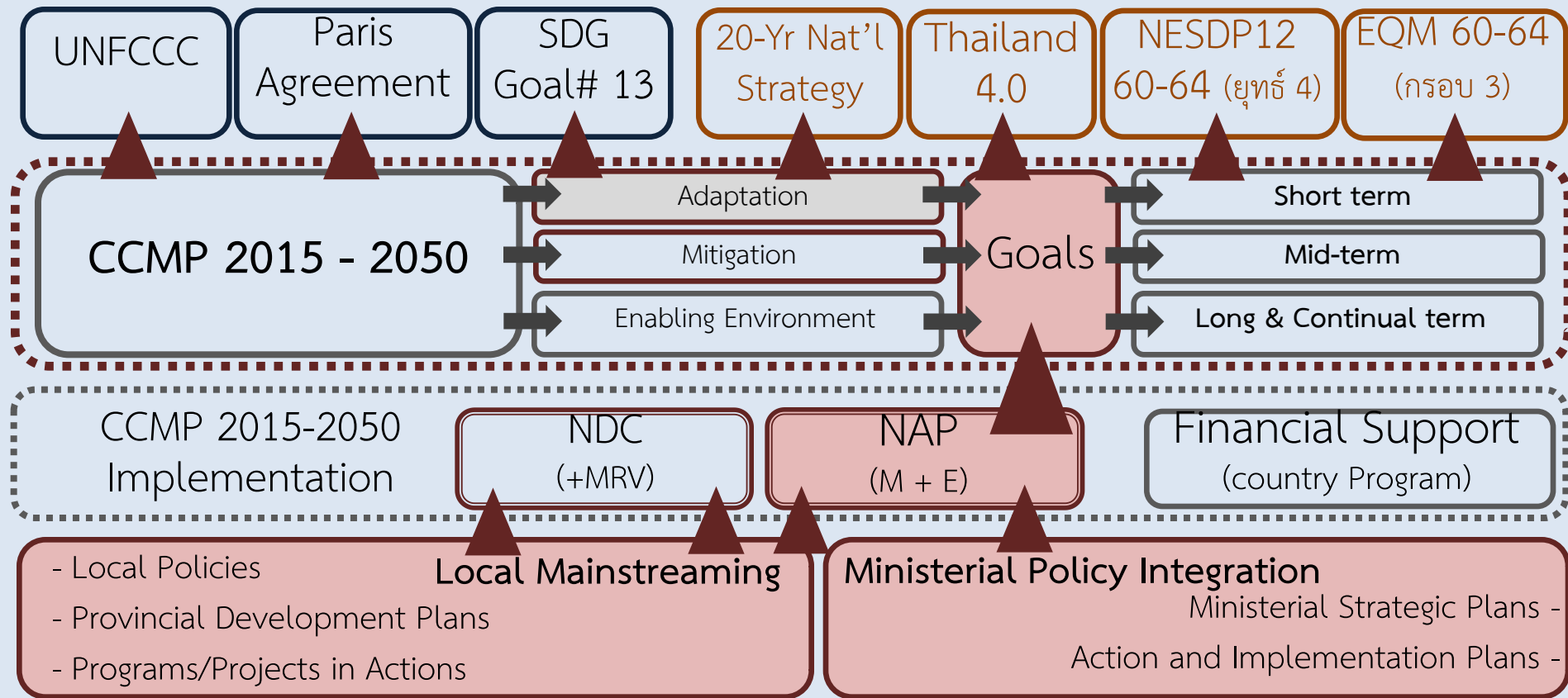


Thailand's National Adaptation Planning Process





Thailand's National Adaptation Planning Process





Contribution of ONEP-CITC Collaboration Project





Contribution of ONEP-CITC Collaboration Project



NAP Formulation Process 2016-17

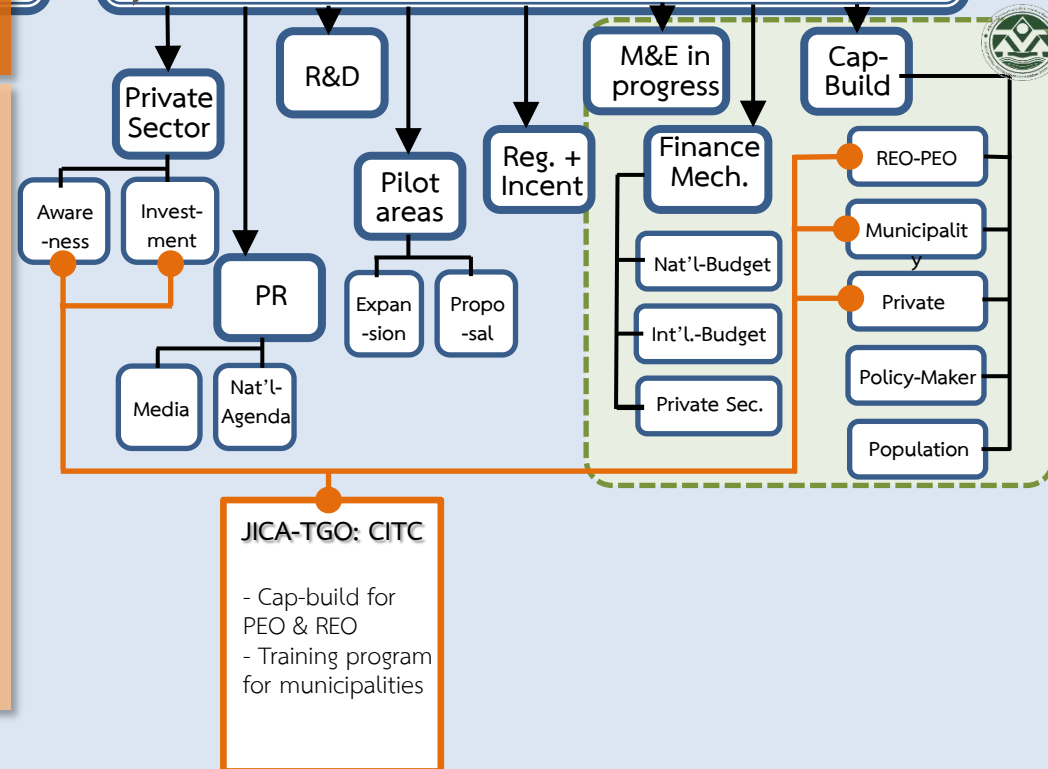
Approval 2018

NAP Implementation Process 2018-21

TGO: CITC
2018-2020

NAP #1 (2018-2021)

1. Training curriculum for municipalities
2. Training curriculum: (Training of Trainers) (PEO, REO & MoNRE officials)
3. Catalyzing private-sector involvement: Awareness & Investment





Thank you

Climate Change Management Coordination Division
Office of Natural Resources and Environmental Policy and Planning
Ministry of Natural Resources and Environment

Rama VI Rd. Samsane-nai, Preya-Thai district, Bangkok 10400 Thailand

Tel: 66 2265 6500 ext. 6784, 6842

ccmcpolicy@gmail.com

<http://climate.onep.go.th>