

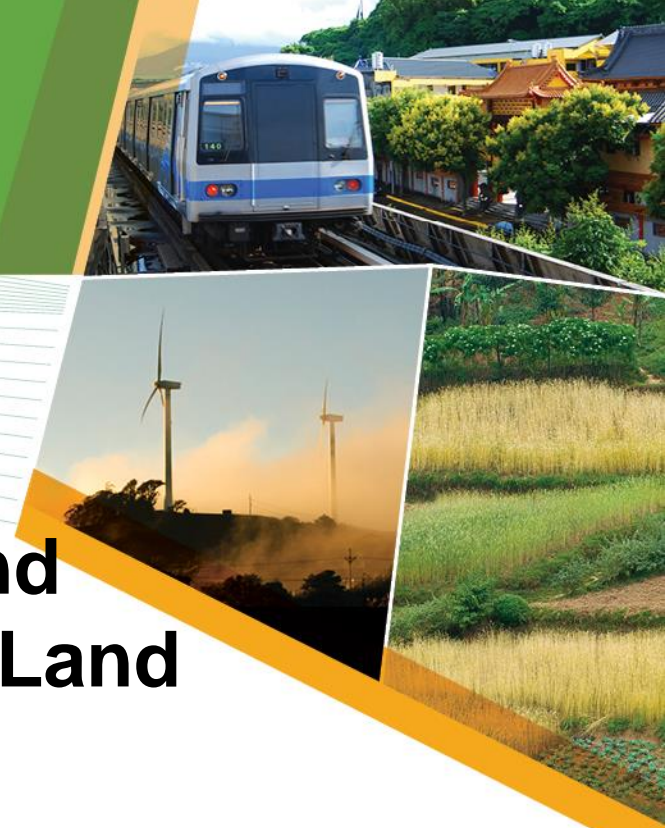


Advancing climate-resilient
low emission development
around the world

The Global LEDS Partnership and Agriculture, Forestry and Other Land Use Sector (AFOLU)

**Advancing Climate-Resilient
Low Emission Development in
the AFOLU Sector**

Presented at the LoCARNet Forum, Bogor, 24 Nov 2014

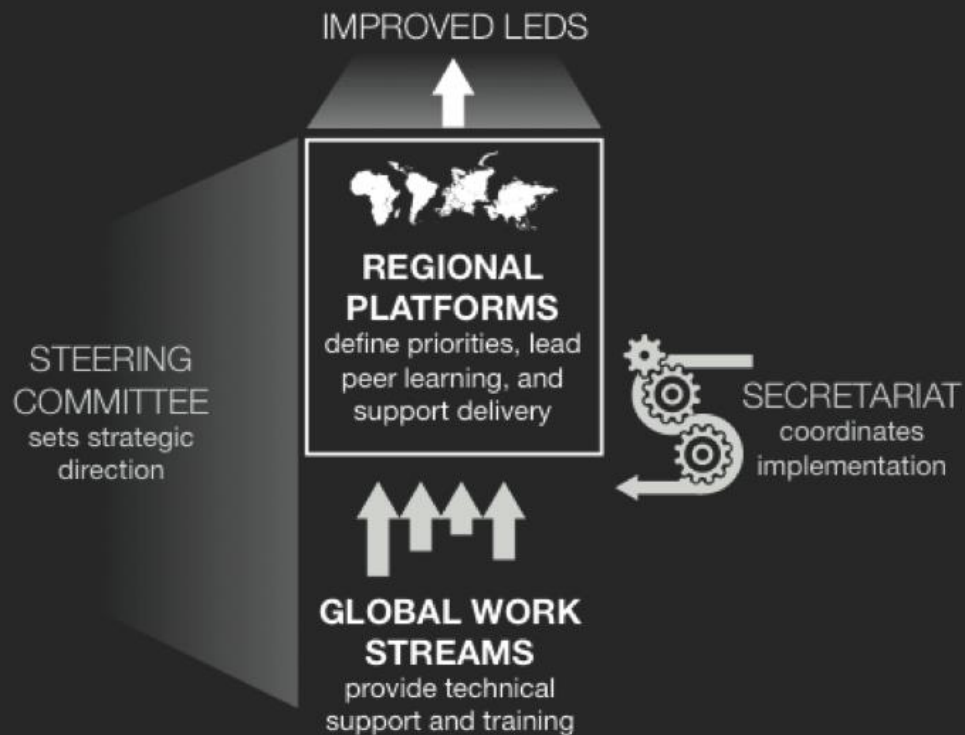


About the Partnership

- Founded to advance climate-resilient low emission development
- Coordination, information exchange, and cooperation to advance low emissions growth.
- Launched in early 2011,
- [140 governmental and international institutions.](#)
- Distributed leadership model

About the Partnership

How the Partnership Works



The LEADS GP open and collaborative operating approach allows members to leverage resources and enhance coordination of climate-resilient low emission development activities, tools, and resources to achieve common objectives.

AFOLU WG Goal & Objectives

TWG \ Region	Asia Region	Africa Region	South America
AFOLU TWG	Activities	Activities	Activities
Energy TWG	Activities	Activities	Activities
Transport TWG	Activities	Activities	Activities
Waste TWG	Activities	Activities	Activities
Other	Activities	Activities	Activities

AFOLU WG Goal & Objectives

GOAL

- Promote & facilitate information
- Knowledge sharing
- Adoption of tools and solutions



STRATEGIES

- **Communicate** among stakeholders in the AFOLU sector.
- **Identify tools** that could help facilitate design and implementation of LEDS for AFOLU
- **Identify solutions** that could help facilitate design and implementation of LEDS for AFOLU

STRATEGIES

- Facilitate and **enhance knowledge sharing** between stakeholders in the AFOLU sectors in context of climate-resilient and low-emission development.
- Establish **expert linkages**.



AFOLU WG – The Steering Committee

AFOLU WG Steering Committee

- To provide strategic direction to identify, design, organize, and deliver support activities.
- The Steering Committee will also generate resources to support the working group.
- Currently transitioning to a full Steering Committee and seeking National and International nominations



AFOLU WG – The Secretariat

AFOLU WG Secretariat

- Documentation
- Coordination
- Communication
- Promote membership

Global Environment Centre

Petaling Jaya, Selangor DE, MALAYSIA,

Phone: + 603 7957 2007 Fax: + 603 7957 7003

E-mail: ledsafoluwg@gmail.com

Made possible with seed funds from USAID LEAF and the USFS

Terms: from 1 Aug 2014 – 31 July 2015)



AFOLU WG – The Members

AFOLU WG MEMBERS

- Members benefit from and contribute to peer-to-peer learning,
 - Knowledge sharing,
 - Capacity building, and
 - Coordination activities
-
- Organizations and individuals, public, private, and non-governmental sectors

MEMBERSHIP (online registration)



Advancing climate-resilient low emission development around the world

Agriculture, Forestry And Land Use Working Group (AFOLU WG)

MEMBERSHIP APPLICATION FORM

Please tick where appropriate.

Membership type:

- Individual Organization
 If my organization would like to be a member of Agriculture, Forestry And Land Use Working Group (AFOLU WG)
 If we understand and accept the terms and condition of membership (see Membership Terms & Conditions)
 If my organization would like to consider contributing and/or supporting AFOLU WG activities
 If my organization would like to receive the AFOLU WG e-newsletter

Focal area:

- Agriculture Forestry Land Use REDD+ Others _____

Particulars

Name:

Name of Organization/Agency:

Organization/Agency Type:

- CSO Private Sector Funding Agency Government Agency Research Organization

Others, please specify: _____

Address:

Country:

Telephone number:

Fax number:

E-mail:

Website:

Brief profile:

(Individual/ organization)
max 8 lines

Signature:

Date:

Please return completed form to The Secretariat, LEDS AFOLU Working Group @Global Environment Centre, 2nd Floor, Wisma Hing, 78, Jalan SS2/2, 47300 Petaling Jaya, Selangor DE, MALAYSIA, Phone: + 603 7957 2007, Fax: + 603 7957 7003, E-mail: ledsafoluwg@gmail.com



Advancing climate-resilient low emission development around the world

Agriculture, Forestry And Land Use Working Group (AFOLU WG)

Terms and Conditions of Membership

Membership:

Membership is voluntary, cost-free, and unlimited in duration. Membership is open to organizations and individuals interested in supporting the vision, goal, and objectives of the AFOLU WG.

Benefit of Membership:

The objective of AFOLU WG membership is to allow members to benefit from and contribute to peer-to-peer learning, knowledge sharing, capacity building, and coordination activities to advance LEDS in the AFOLU sector at the sub-national, national, regional or global level.

The AFOLU WG brings tangible, unique value and benefits to national, regional, and international stakeholders who are members. The AFOLU WG offers the following to members:

- A network for global peer exchange on lessons and experiences in fostering LEDS in the AFOLU sector;
- A platform to access training, technical assistance, and capacity building on key LEDS topics in the AFOLU sector;
- Access to AFOLU WG and LEDS GP in-person and online events year-round;
- Quarterly e-newsletters and other email updates on LEDS topics and best practices in the AFOLU sector;
- A venue to identify opportunities and collaborate to improve or tailor LEDS activities in the AFOLU sector, tools, and resources to benefit members and their region;
- A way to leverage resources and promote synergies – avoiding duplication of efforts and strengthening ongoing efforts; and
- A forum to cultivate and support champions for LEDS in the AFOLU sector, to demonstrate leadership in LEDS and in promoting green development pathways.

Members Obligations

Where possible and appropriate, members of the working group should:

- Provide information on their LEDS initiatives;
- Be willing to share experiences and lessons on LEDS implementation;
- Lead and/or participate in activities supported by the AFOLU WG (and/or the LEDS Asia or Global Partnership);
- Conduct outreach to broaden awareness and participation in AFOLU WG activities and LEDS; and
- Collaborate on resources development and improvement.

The Low Emission Development Strategies (LEDS) Global Partnership was founded in 2011 to enhance coordination, information exchange, and cooperation among countries and international programs working to advance low emission climate resilient growth. The LEDS Global Partnership currently brings together LEDS leaders and practitioners from more than 140 countries and international institutions through innovative peer learning and collaboration forums and networks. For the full list of participants and more information on partnership activities, see ledsgp.org.

version: oct2014



Advancing climate-resilient low emission development around the world



AFOLU WG – Activities

AFOLU WG Work Plan

- Climate Finance to unlock Green Bonds in AFOLU
 - 2 members on Standards group
 - Actively seeking to support green bond and commercial projects
- Low Emission Land Use Planning (LELUP)
 - Case being sought
 - University curricular developed by USAID
- Expert Peer Network
 - Establishing needs and linking experts with members



AFOLU WG Activity Plan 2014-2015

Activity	Location	Dates	Organization
Establish WG Secretariat	Kuala Lumpur	July-Aug	GEC, USFS, USAID LEAF
Regional training on integrating forestry, wetland, and land use and land cover into national GHG inventories	Jakarta	20-22 Aug	SilvaCarbon, USAID LEAD
WG Sessions at LEDS GP annual meeting	Addis Ababa	27-29 Aug	WG Planning Committee
Draft WG framework and guidance document, including ToR for Steering Committee		15 Sep	WG Planning Committee
WG sessions at Asia LEDS Forum	Yogyakarta	11-13 Nov	WG Planning Committee
WG meeting post-forum	Yogyakarta	14 Nov	WG Planning Committee
Promote AFOLU-related information sharing (toolkits, guidelines/manuals, publications, etc.) via website, discussion forum, newsletter, emails and others.		Regularly	Secretariat
Dissemination of e-newsletter		Dec 2014, March 2015	Secretariat
A regional training on integrated fire management	Indonesia	Dec 3-5 2014	GEC, IFACS, USAID LEAF and USFS
Regional training on approaches for estimating emissions from land-based fires	Chiang Mai	Jan 20-21 2015	USAID LEAF & USFS
Regional training on low-emission land use planning	Chiang Mai	TBC	USAID LEAF & USFS in conjunction with regional universities
Regional training on multi-criteria analysis for environment, economic, and social: Triple Bottom Line	TBC	TBC	USAID LEAD
Regional meeting on wetland mapping	TBC	TBC	USAID LEAD, SilvaCarbon, USFS

Join the Working Group!

Website:

<http://ledsgp.org/sector/AFOLU>

Secretariat: (GEC)

Chair (interim) Brett Shields –
brett.shields@gec.org.my

Faizal Parish – fparish@gec.org.my

Adelaine Tan – adelaine@gec.org.my

Geoffrey Blate – gblate.usfs@gmail.com

David Ganz – dganz@winrock.org



Advancing climate-resilient low emission development around the world

AGRICULTURE, FORESTRY AND LAND USE WORKING GROUP (AFOLU WG)



Photo credit: Geoffrey Blate/USFS

The LEDS GP Agriculture, Forestry and Land Use (AFOLU) Working Group was first convened at the Asia LEDS Forum in 2013 and was jointly organized by USAID's supported Lowering Emissions in Asia's Forests (LEAF) program and the United States Forest Service (USFS). The AFOLU Working Group serves as a platform for engaging decision makers, practitioners, and researchers while working towards integrating low emissions development activities in the AFOLU sector.

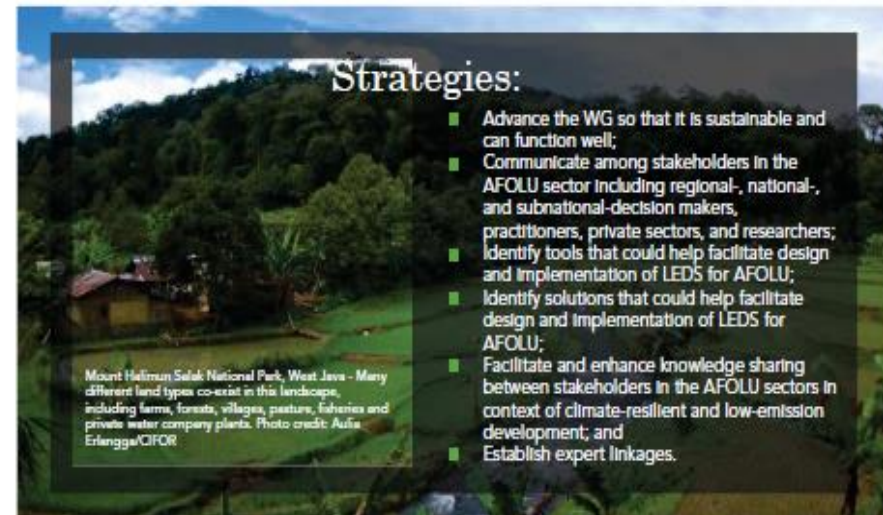
Goal:

To promote and facilitate information, knowledge sharing and adoption for tools and solutions for climate-resilient, low-emission development across the agriculture, forestry and other land use sectors.

Objectives:

- To engage with other networks and other LEDS sectors on promoting low emissions development in the AFOLU sector;
- To develop innovative approaches to problem solving and capacity building of member individuals and organizations;
- To harmonize and integrate solutions across existing communities, provide training and capacity building; and
- To expand the network to include additional stakeholders.

Focal Areas: Agriculture, Forestry, Land use and REDD+.



Strategies:

- Advance the WG so that it is sustainable and can function well;
- Communicate among stakeholders in the AFOLU sector including regional-, national-, and subnational-decision makers, practitioners, private sectors, and researchers;
- Identify tools that could help facilitate design and implementation of LEDS for AFOLU;
- Identify solutions that could help facilitate design and implementation of LEDS for AFOLU;
- Facilitate and enhance knowledge sharing between stakeholders in the AFOLU sectors in context of climate-resilient and low-emission development; and
- Establish expert linkages.

Mount Halimun Salak National Park, West Java - Many different land types co-exist in this landscape, including farms, forests, villages, pasture, fisheries and private water company plants. Photo credit: Aulia Erlangga/CIFOR