
Integrated Assessment Model for Low Carbon Growth Policy and the Importance of GHG Emissions Reductions in Cities



Mr. Soichiro Seki
Director General, Global Environment Bureau
Ministry of the Environment of Japan

LoCARNet First Annual Meeting
Bangkok, Thailand October 16-17, 2012

Recent Japanese climate policy and the role of science

- 2009: Hatoyama Initiative: 25% GHG reduction target
⇒ Discussion on national countermeasures and on mid-/long-term roadmap
- 2011: Great East Japan Earthquake; accident at TEPCO's Fukushima Dai-ichi Nuclear Power Station
⇒ Review of energy policy from scratch
- 2012: Innovative Strategy for Energy and the Environment



- Key player → Central Environmental Council
8 working groups composed of more than 100 experts in total
- The Asia-Pacific Integrated Model (AIM):
 - quantitative and comprehensive countermeasures
 - economic impact analysis

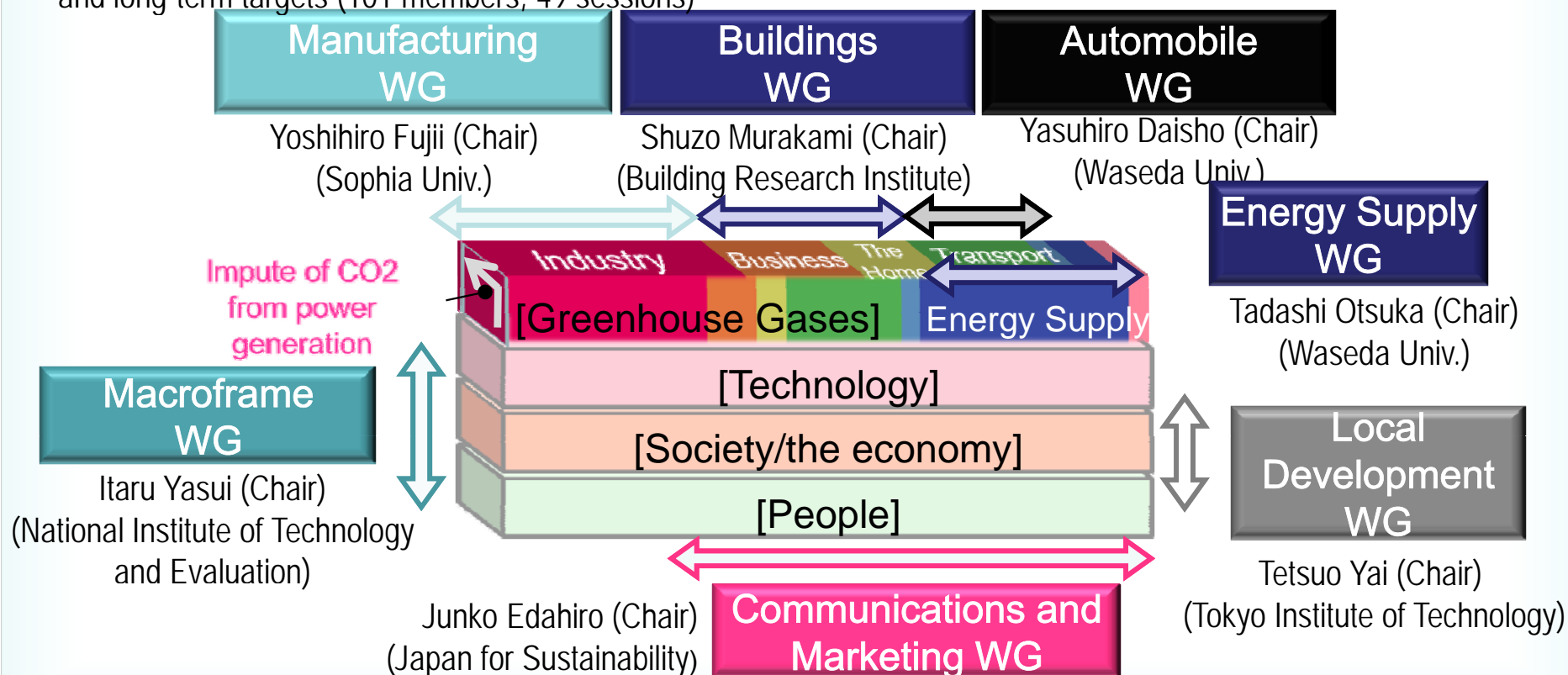
Review conducted with cooperation of multiple experts & specialists

Reviews were held from April to December 2010, involving over 100 experts & specialists from a wide range of fields

**Mid- and Long-term Roadmap Subcommittee, Global Environmental Committee,
Central Environmental Council: Chaired by Dr. Shuzo Nishioka**

Working Groups for the Mid- and Long-term Roadmap for Global Warming Countermeasures

Reviews conducted from specialist and technological standpoints concerning policies and measures to achieve mid- and long-term targets (101 members, 49 sessions)



The Asia-Pacific Integrated Model (AIM)

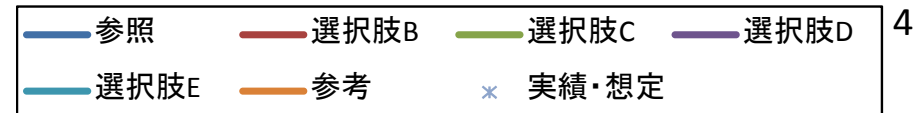
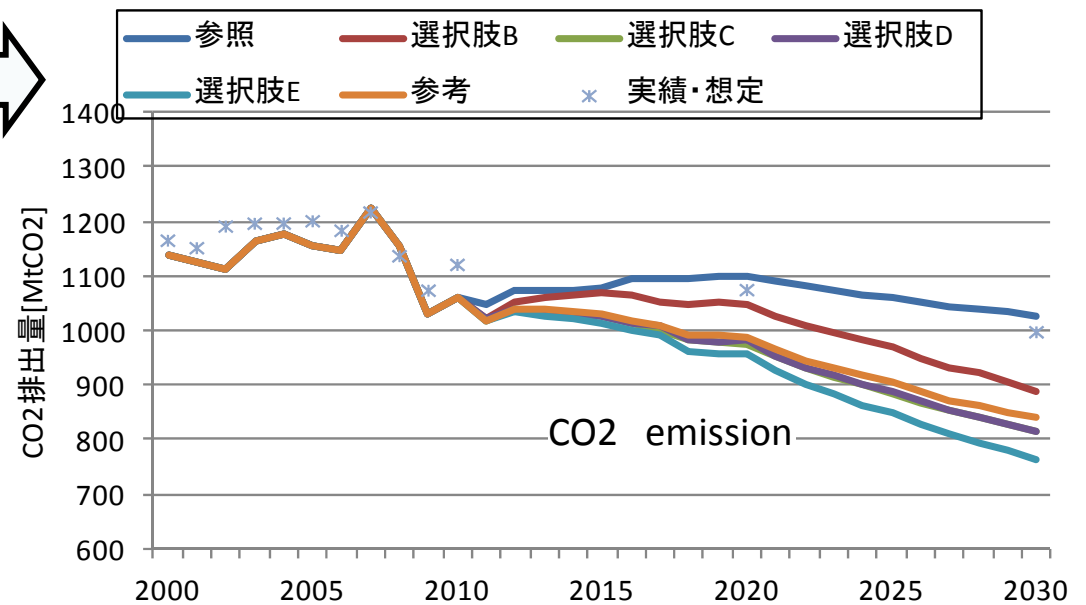
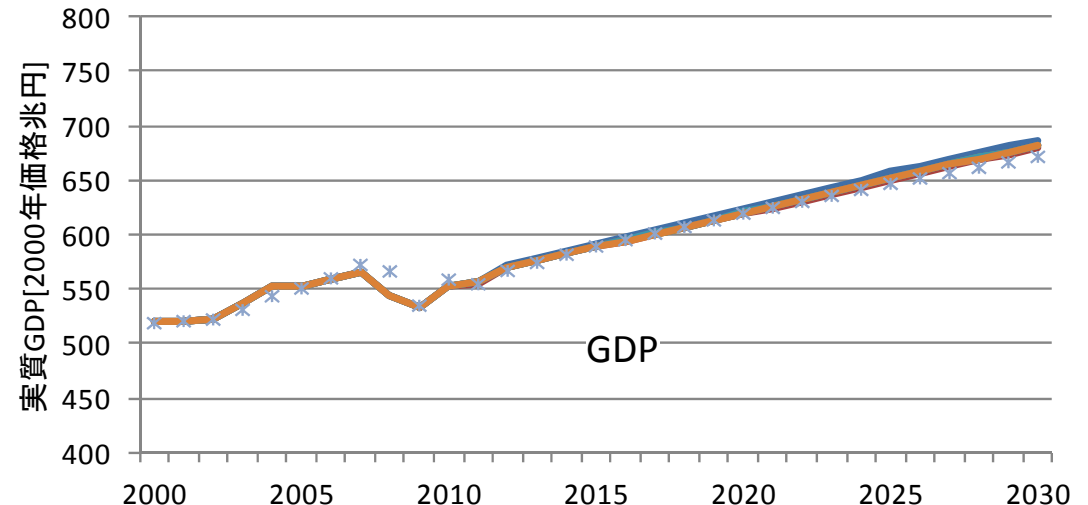
AIM Enduse model

- Assessment model for technologies of countermeasures against global warming in Japan
- Searches effective combination of technologies based on certain macro economic frameworks.

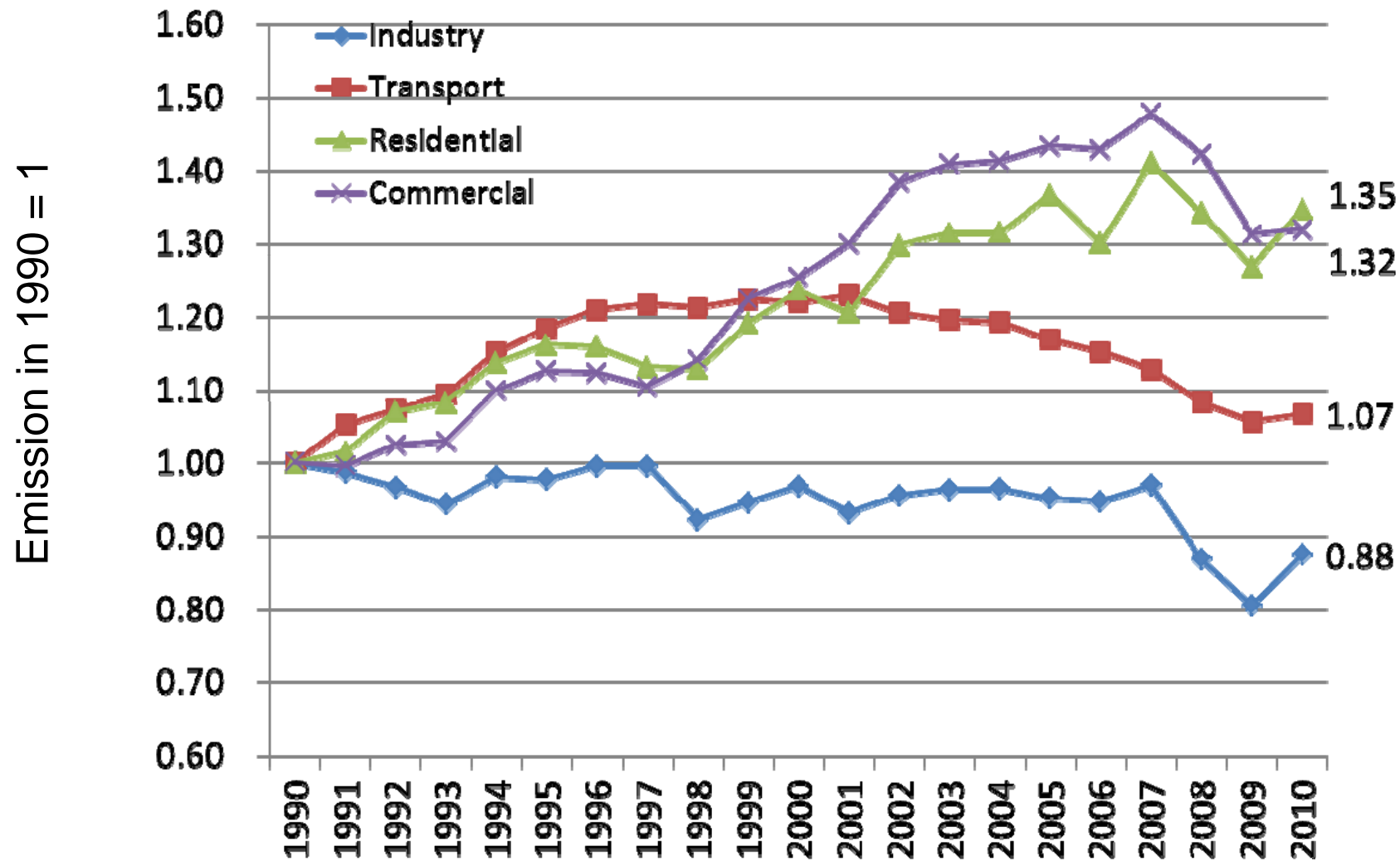
Technology information

AIM CGE model

- Computable General Equilibrium model for Japan
- Iterative Equilibrium
- Searches comprehensive effectiveness of a certain policy, its influence under the hypothesis of technology development.



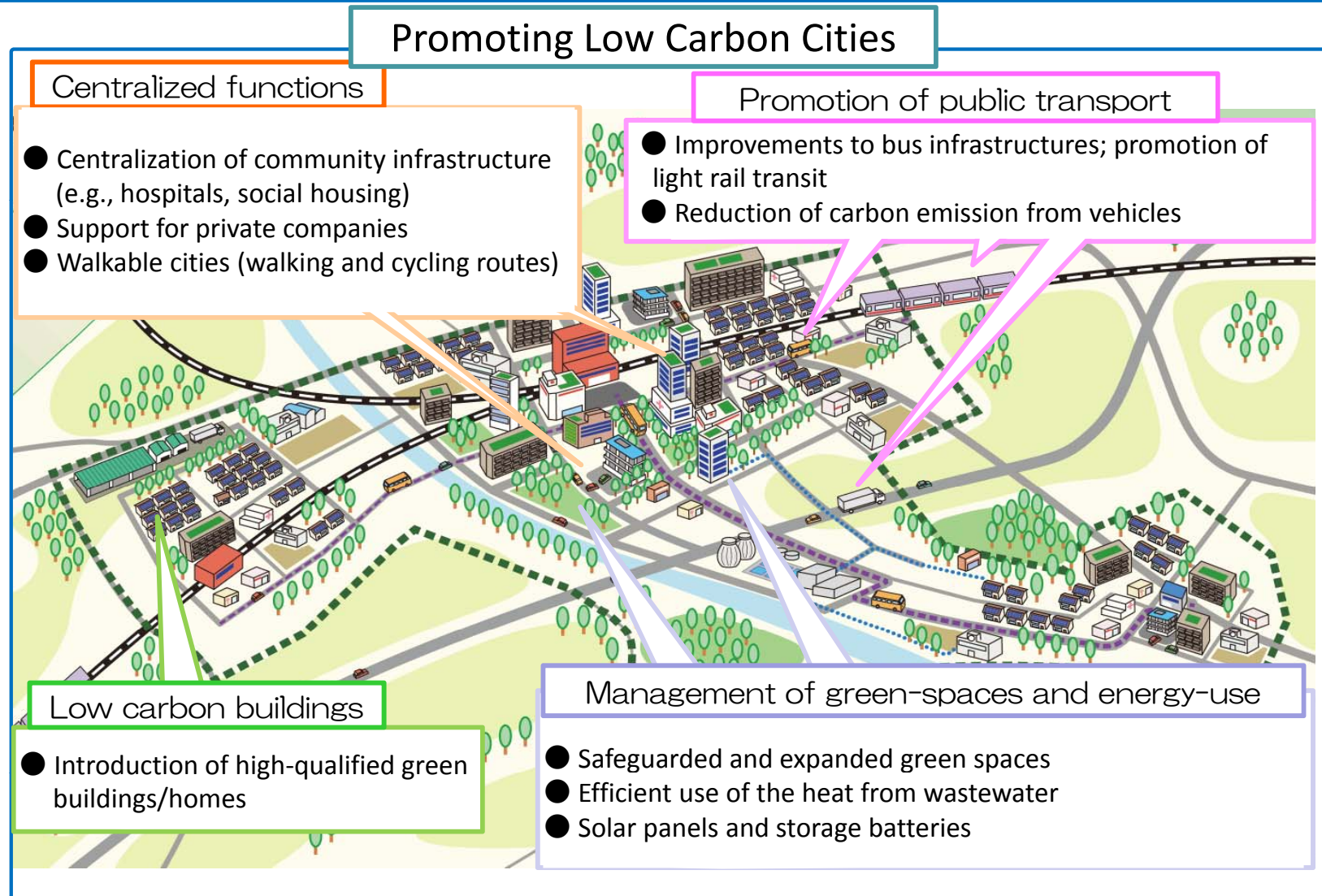
Historical GHG emissions in Japan



Low Carbon Planning: Act on Promotion of Low Carbon Cities

Japan has passed legislation introducing the framework for creating low carbon cities, against a background of changes within the energy balance since the Great East Japan Earthquake and rising concerns about climate change. The act provides an approach to make schemes for:

- the introduction and promotion of good practices in low carbon city creation and improved transportation systems,
- revitalization of the housing market and of local economies through investment.



Thank you for your attention.
ご清聴ありがとうございました

