

A photograph of a rice paddy field. In the foreground, several farmers are bent over, working in the shallow water. They are wearing traditional hats and clothing. The water reflects the sky and the mountains. In the background, there are snow-capped mountains under a clear blue sky. A white car is visible on a road in the distance.

International Low Carbon Society Research Network

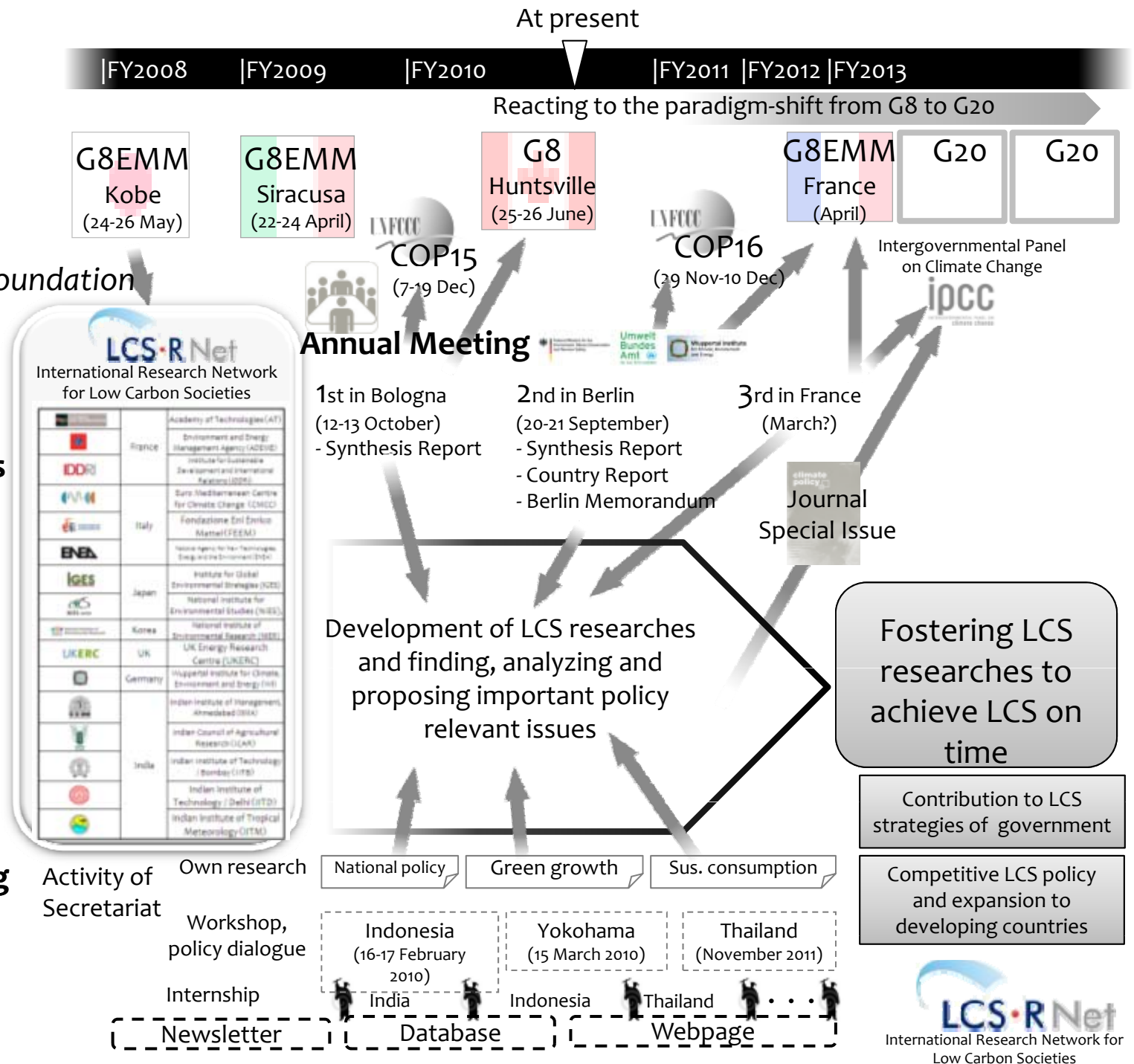
The 2nd Annual Meeting
20-21 September, 2010 Berlin
Shuzo Nishioka, Secretary General (IGES)

Feeling of the blessings of climate

LCS-RNet

5 year plan

1. Management of the Network
2. Scientific Policy Recommendations
3. Development of LCS Researches
4. Capacity Building of Developing Countries
5. Public Relations



A photograph of a rice paddy field. In the foreground, several farmers are bent over, working in the shallow water. They are wearing traditional hats and clothing. The water reflects the sky and the mountains. In the background, there are large, rugged mountains with significant snow cover under a clear blue sky. A few cars are visible on a road in the distance.

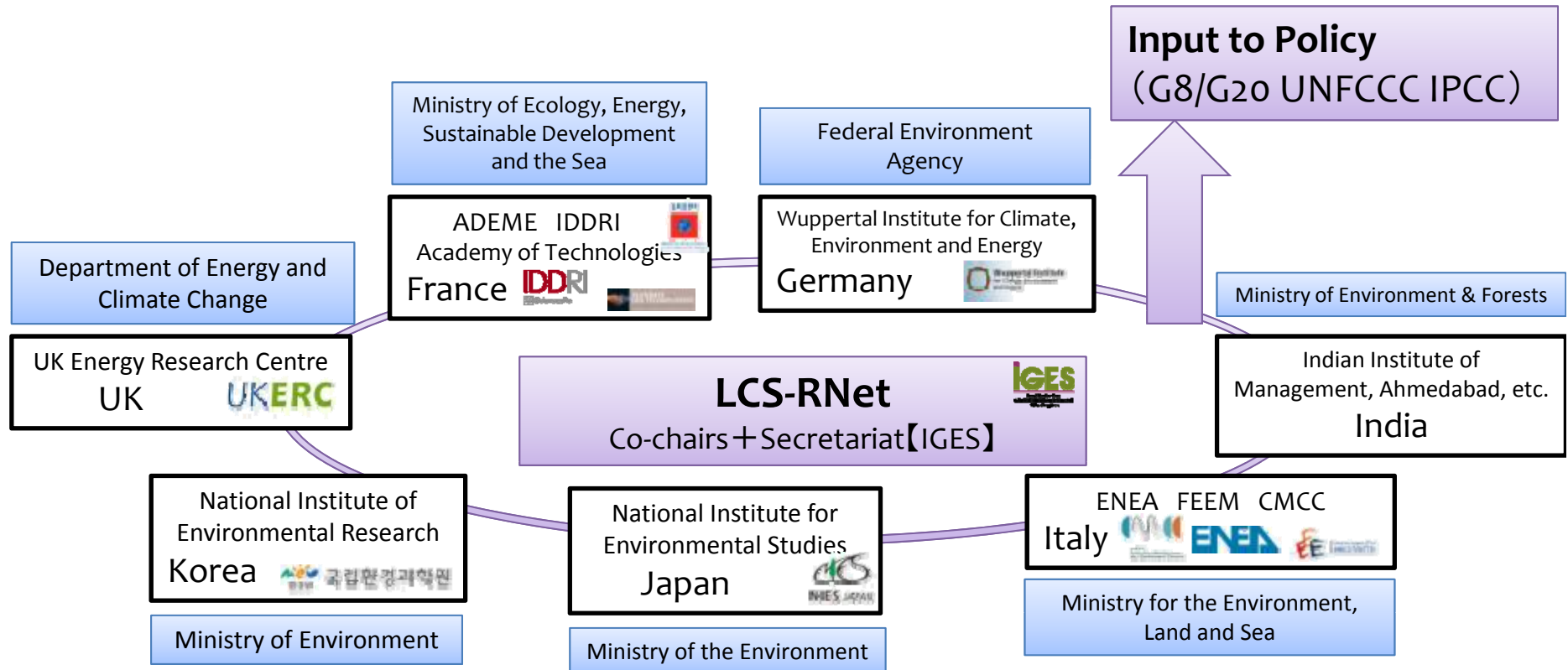
International Low Carbon Society Research Network

The 2nd Annual Meeting
20-21 September, 2010 Berlin
Shuzo Nishioka, Secretary General (IGES)

Feeling of the blessings of climate

LCS-RNet(International Research Network for Low Carbon Societies)

- Supported its foundation by G8 Environment Ministers Meeting.
- Research network to foster researches to realize low-carbon societies.
- 7 countries and 15 research institutes (currently)



Publications

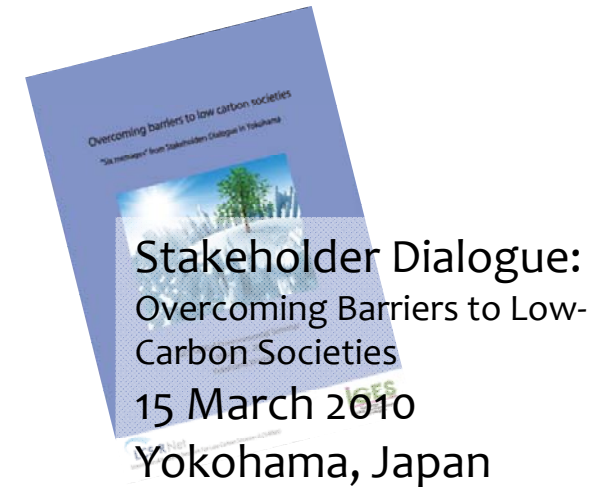


1st Annual Meeting
12-13 October 2009
Bologna, Italy



Expert Meeting
Stakeholder Dialogue
on Low Carbon
Societies
26-27 June 2009
Hayama, Japan

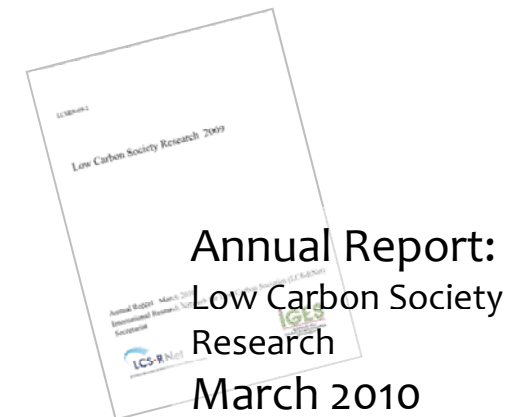
by Secretariat



Stakeholder Dialogue:
Overcoming Barriers to Low-
Carbon Societies
15 March 2010
Yokohama, Japan



Policy Dialogue:
Sustainable and Low-
Carbon Development in
Indonesia and Asia
16-17 February 2010
Bogor, Indonesia



Annual Report:
Low Carbon Society
Research
March 2010

Photo

Side event at AWG Sessions of
the UNFCCC
3 November 2009, Barcelona,
Spain

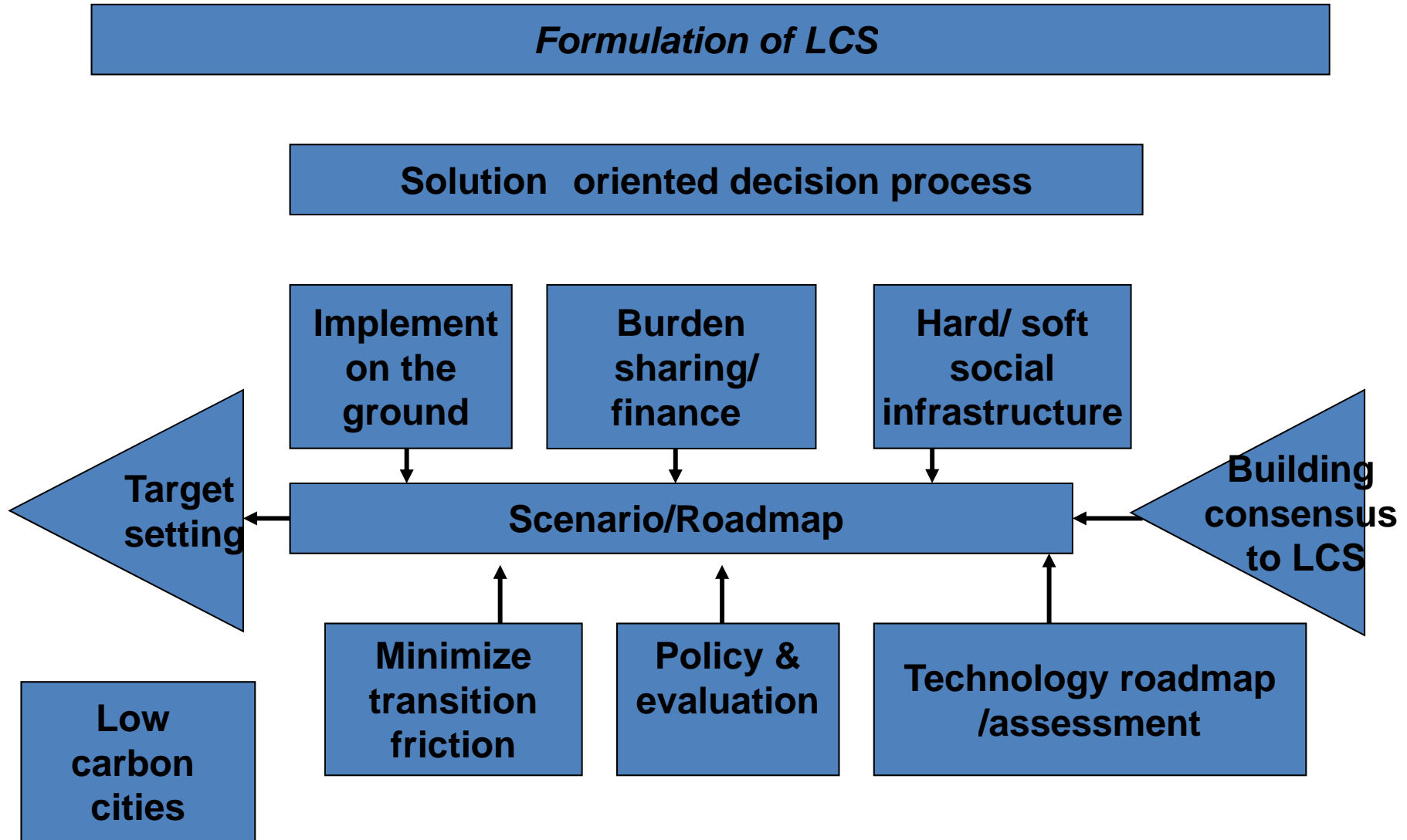


1st Annual Meeting
12-13 October 2009,
Bologna, Italy



COP15 Side-event
16 December 2009,
Copenhagen, Denmark



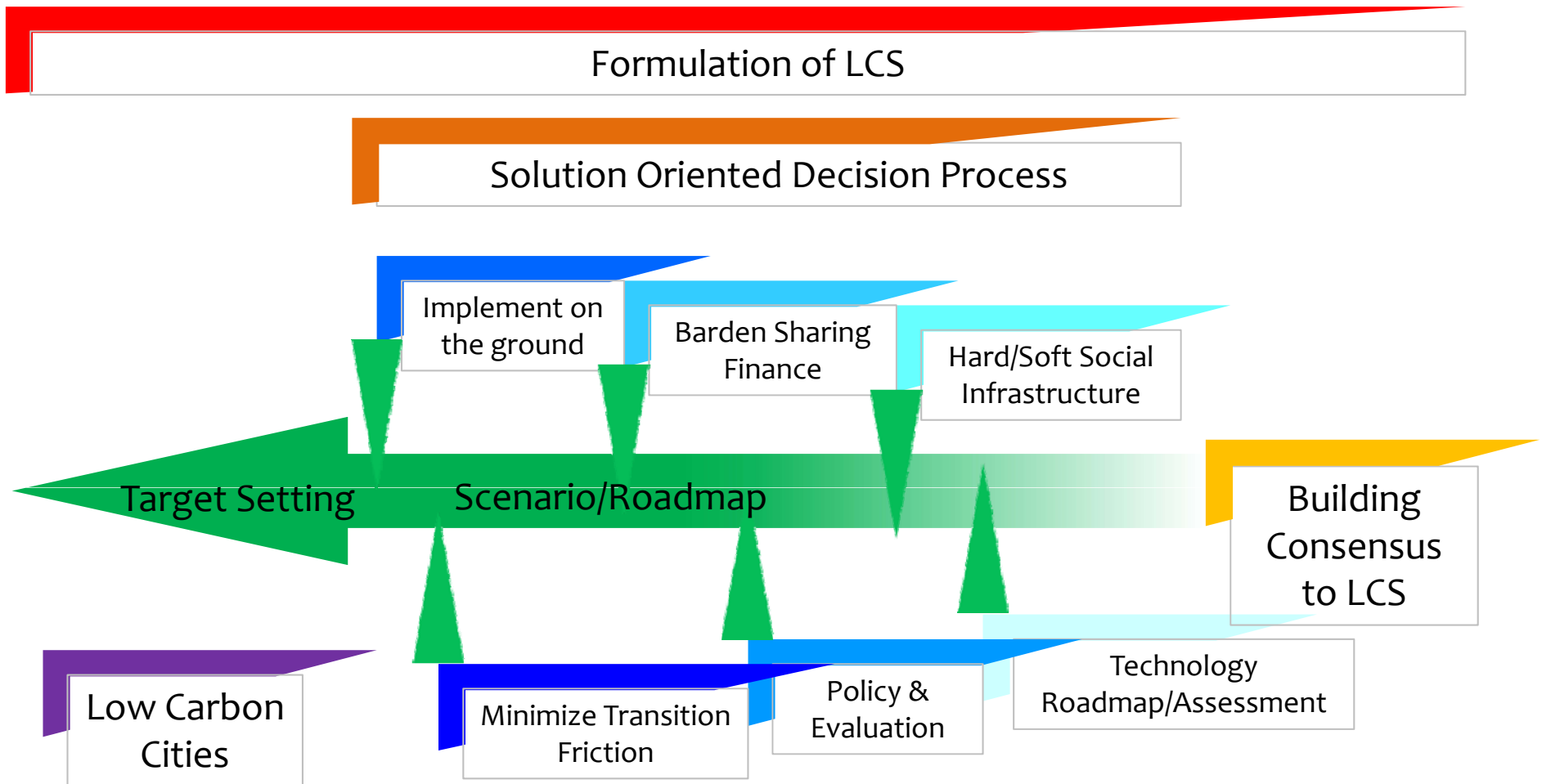


A dozen challenges to be tackled by LCS research in Japan

Progress of Japan's Climate Policy and Research integration toward Low Carbon Society

	<i>Mid/ long- term GHG reduction policy making</i>	<i>Contribution from Research Society</i>
-2005	More focus on Kyoto target	
2005-	G8 Glen Eagles Process set	70% reduction scenario research project (04-08, NIES/ Kyoto U., MOE+50 researchers), Japan/UK-Joint RP
2007.6	G8 Heiligendamm: 50% reduction globally (PM. Abe)	Technological innovation scenario to 2050 (METI)
2008.6	Kobe G8+Environmental Minister's Meeting: LCS RNet proposed	Environmental Energy Innovation Plan published by CSTP (Central Council for S&T Policy, Chair: PM)
.7	G8 Toyako: Japan 2050 target 60-80% reduction towards Low Carbon Society (PM. Fukuda)	Low Carbon Model Cities (Local base)
2008.12-2009.4	Cabinet's Consultative Committee (Chair: Fukui) for 2020 target to Copenhagen	6 modeling institutions (NIES, IEEJ, RITE, JCER, Keio U.) invited. Discussed tech. feasibility, economic impact of policies, burden-sharing, international equity
.6	G8 L'aquila: Japan's 2020 target of 8%reduction (1990 base) PM.Aso	
2009.9	UN Climate Summit: Japan's target 2020:25%, 2050 80% (1990 base) (PM. Hatoyama)	LCRNet Bologna Meeting (Oct.)
.12	Re-examination of Fukui Committee for new target	(Chair: Ueta) Same institutions invited as Fukui Com.
2010.3	' Basic Law on Global Warming Countermeasures ' agreed by Cabinet, passed House of Repres. (June)	'Center for Low Carbon Society Strategy' established by JST/ MEXT(2009 Dec.) with 30 researchers
2010.4	Envir. Minister Ozawa's draft of 25% reduction	
.4	Roadmap Sub-committee (Chair: Nishioka) under Central Council of Environment started	More than 60 researchers (Univ. ,Research institution, Industry) engaging under 8 working groups. Will conclude Dec. 2010
.6	Draft Law abandoned, due to election of House of Councilors	METI :Basic plan of Energy opened, 2030:>30% reduction (1990 base) Energy related research institutions participated

A Dozen Challenges to be Tackled by LCS Research in Japan



The roadmap to achieve a LCS

by research and policy

Synthesis of findings of the 1st Researchers Meeting

1. Long term and mid term targets

Developed C.: less materialistic

Developing C.: leap frogging

2. Economy

- Competitive & knowledge driven
- Green growth will result from a policy driven process

3. Technology

- Radical technological change needed
- Short term R&D & long term innovation
- Climate policy & R&D have to be synchronised

4. Society

- Public policy is important for facilitating lifestyle change
- Models to achieve higher quality of life with less carbon

5. Cross cutting issues

A photograph showing several farmers in a flooded rice paddy field. The farmers are bent over, working in the water. In the background, there are snow-capped mountains under a clear blue sky. The scene is set in a rural area with some buildings and a road visible in the distance.

International Low Carbon Society Research Network

The 2nd Annual Meeting
20-21 September, 2010 Berlin
Shuzo Nishioka, Secretary General (IGES)

気候の恵みをかみしめる